

Historic, archived document

Do not assume content reflects current scientific knowledge, policies, or practices.

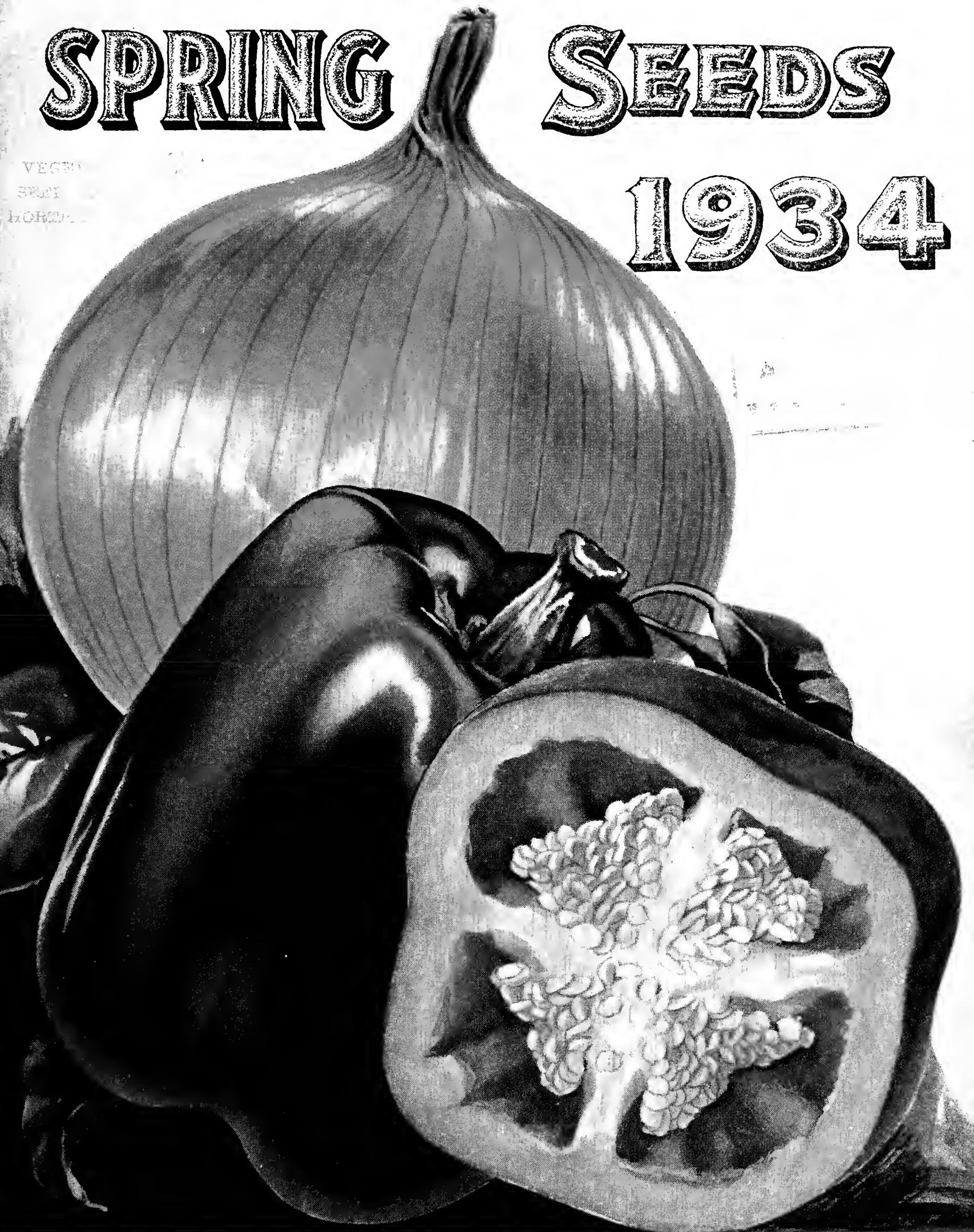


6247
WLEX 21
GARDEN FLOWER & FIELD

SPRING SEEDS

1934

VEGET
SEED
GARDEN



SPRINGFIELD SEED COMPANY
The Home of "Star Brand Seeds"

CAMPBELL AND WALNUT STREETS

SPRINGFIELD, MISSOURI

SPRINGFIELD SEED COMPANY

Corner of Campbell and Walnut Streets, Springfield, Mo.

We believe it is confusing to have a long list of varieties from which it is difficult to select what you want. We have therefore selected for your guidance those varieties that are best suited to the climatic conditions of the great Southwest.



No plot of ground is too small for a garden, whether for vegetables or flowers. There are some varieties particularly suited to your little plot and will thrive to be a source of pleasure and satisfaction.

To guard the interests of our customers and maintain the high standard of excellence of Star Brand Seeds, we operate a modern seed laboratory, equipped as recommended by the United States Department of Agriculture, in charge of a certified seed analyst. We have also our own trial grounds and greenhouses with over 44,000 feet of glass.

Every lot of seed we send out must be tested for purity and germination. Be on the safe side, plant "Star Brand Seeds".

SPECIAL OFFER

For each order for \$1.00 worth of seeds—in Packets only—You may select

5 Extra 5c Packets FREE!

How to Order "Star Brand Seeds"

Read Carefully

ORDER EARLY—Kindly place your order early so to assist us in getting it out promptly.

YOUR ORDER—Please use the order sheet.

WE DELIVER FREE—Anywhere in the United States, all seeds by packet, ounce, quarter-pound and pound, except where otherwise noted.

HOW TO SEND MONEY—Money may be sent by post-office order, bank draft, express money order or registered letter. If you order amounts to \$1.00 or more, it is best to send by one of these methods. Stamps in small amounts will be accepted.

TERMS—Our terms are cash with order.

NAME, ADDRESS, Etc.—When ordering give name and full address. Many orders are received without the name or postoffice address of sender. It is impossible to fill such orders until they are identified.

WRITE PLAINLY—In ordering goods sent by freight or express, write plainly your express or freight office, county and state in full, giving name of express or railroad company by which you wish them sent.

PLEASE NOTE—If goods do not arrive promptly after you receive our advice of shipment, please let us know, and we shall have them traced at once. If only part of the order is received, please wait a few days for the remainder before writing us.

OUR GUARANTEE—While we guarantee all seeds which we send out to be strictly fresh and to have shown a high germination test, still crops are contingent upon so many conditions of soil and weather, time and manner of planting, cultivation, etc., over which we have no control, that we cannot be responsible for the product, and we give no warranty, express or implied, as to the description, quality, or productiveness of any seeds, plants or bulbs we send out, and will not be responsible for the crop. If the purchaser does not accept the goods on these conditions, they are at once to be returned.

CORRESPONDENCE—Proper attention is given to all letters of inquiry. If we can be of any service to you when you are laying out your garden or making up your order, please command us.

COUNTER CUSTOMERS—We suggest to those who purchase in person at our store the advantage of having their lists made out before they call. In any case it is a great saving of time to the purchaser. The list should have full name and address written on it so that our catalogues may be mailed to the purchaser as issued. We also urge early purchases. January and February are good months in which to purchase.

Prices quoted in this catalogue are subject to change without notice.

PREMIUM WITH EACH

PACKET SEED

ORDER FOR \$1.00 OR OVER

SEE PAGE 1

DOMESTIC PARCEL POST RATES

On Seeds, Plants, Bulbs, Roots, Tools, etc., within the United States and Possessions

First pound or fraction **Each additional pound or fraction**

First Zone	Springfield or 50 miles thereof.....		
Second Zone	within 50 to 150 miles of Springfield...		
Third Zone	within 150 to 300 miles.....		
Fourth Zone	within 300 to 600 miles.....		
Fifth Zone	within 600 to 1000 miles.....		
Sixth Zone	within 1000 to 1400 miles.....		
Seventh Zone	within 1400 to 1800 miles.....		
Eighth Zone	all over 1800 miles.....		

Plus 2c Sur-
tax on Each
Package.

8c
8c
9c
10c
11c
12c
14c
15c

2c
3c
4c
6c
7c
9c
11c

Lbs. Oz. Pkt.

NAME OF ARTICLE WANTED

Price

NOTICE: Please write below the names of any of your neighbors who would be interested in our catalogue.

Filled by

Checked by

Packed by

Weight

PKGS.

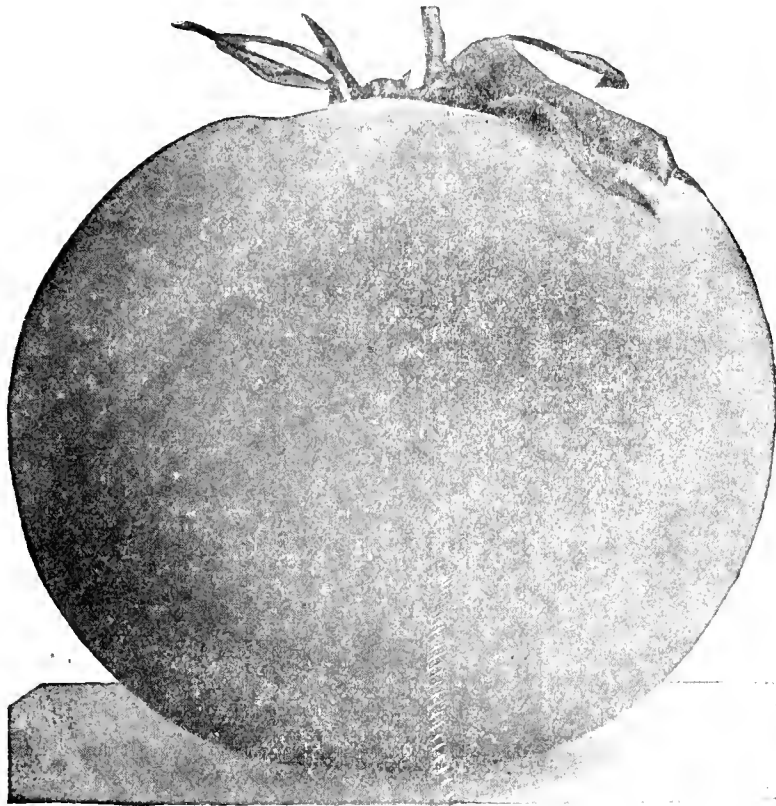
BAGS

BOXES

BBLS.

1934 VARIETIES OF SUPERIOR QUALITY

TOMATO Break O' Day



TOMATO—Break O' Day

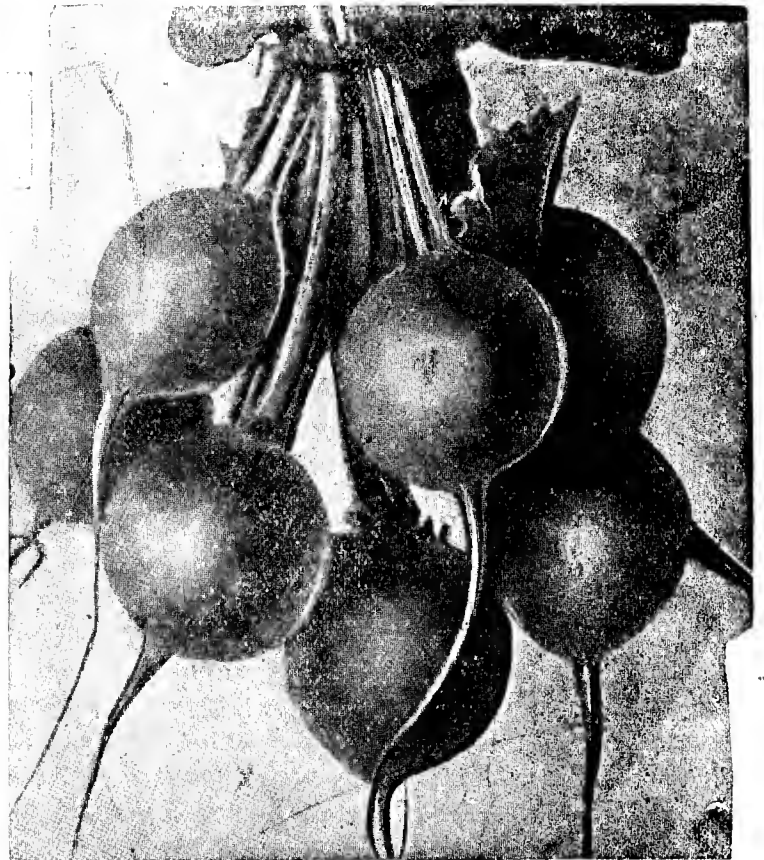
The latest introduction in Wilt Resistant Tomatoes. The earliest, disease resistant, globe shaped, scarlet fruited, meaty Tomato yet introduced; 10 to 12 days earlier than Marglobe, and very productive. Break O' Day will fill a long felt want for an early Tomato with the good qualities of the popular later sorts. It was developed by the U. S. Department of Agriculture, and is a cross between Marglobe and Marvava, having the disease resistant quality of its parents. Vine is of open habit similar to Marvava, but heavier in growth. Fruits are of the Marglobe type, deep globe shaped, solid—meaty, with few seeds, and a beautiful scarlet color. Excellent for home garden, truck farmers or canners. It is destined to be the "PEER" of early Tomatoes. Try it.

Pkt., 10c; oz., 50c; ¼ lb., \$1.50. Postpaid

RADISH

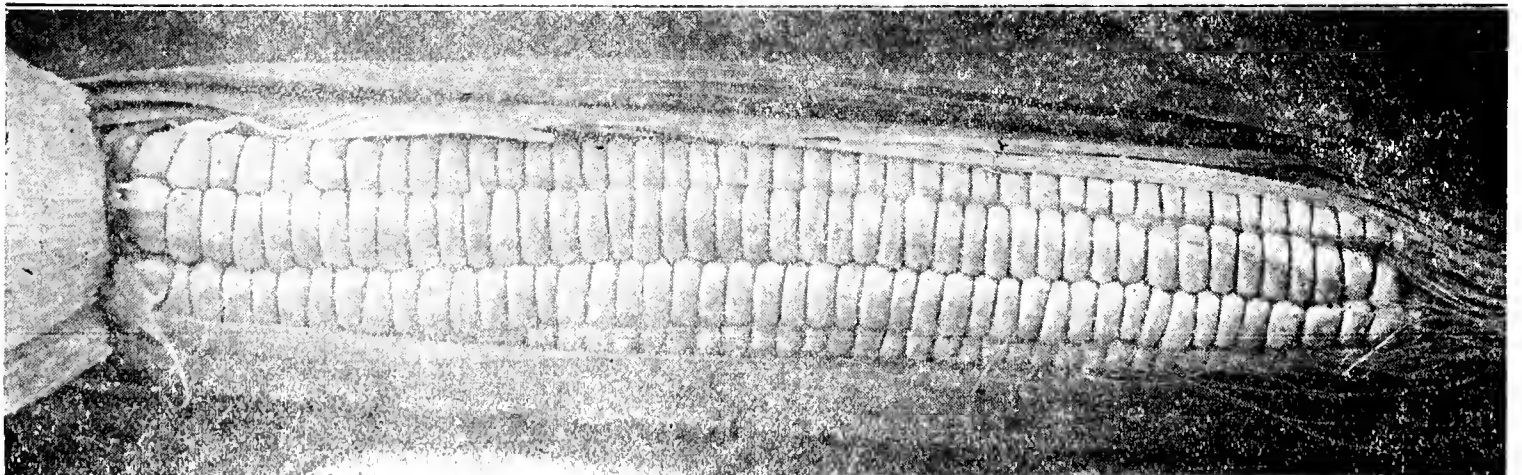
Scarlet Globe.

20 DAYS—The Scarlet Globe Radish is the best all-around radish on the market. It is handsome in both form and color, a beautiful oval of rich scarlet; the flesh is crisp, tender, juicy and mild. The amount of foliage small for the size of the radish, makes it a particularly attractive market sort. As a forcing radish it is the best in every way, bearing the heat requisite for forcing without becoming pithy or spongy. This radish is used by the leading market gardeners both for forcing and out-of-door planting. Owing largely to our care in selecting and growing seed, it leads all other varieties. Pkt., 5c; Oz., 10c.



RADISH—Scarlet Globe.

SWEET CORN



WONDER BANTAM SWEET CORN—All that the Name Implies

With all the matchless sweetness and color of the old reliable Golden Bantam, all the toothsome qualities of taste but one-third larger ears. Packet, 10c; Pound, 30c.

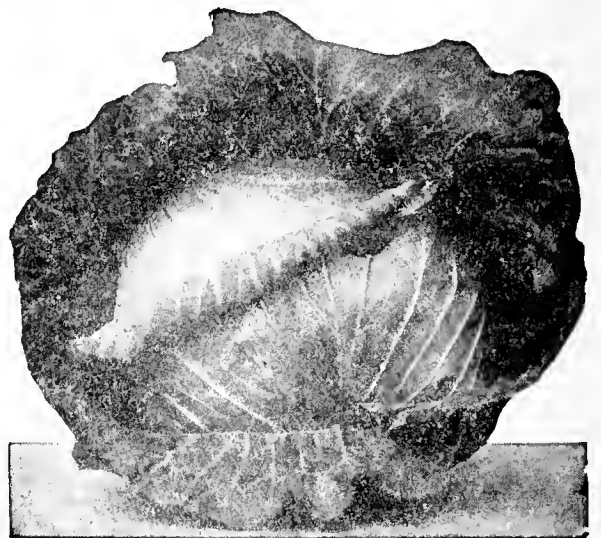
1934 VARIETIES OF SUPERIOR QUALITY

CABBAGE

Golden Acre

THE KING OF THE CABBAGE PATCH

THE NEW GOLDEN ACRE—A very fine new sort from Denmark. It is very uniform; almost every head could be cut at the same time. Wonderfully early, of the Copenhagen type, but much earlier than Copenhagen (fully 10 days earlier). This extra earliness assures higher prices for the market gardener—and a more tender, more crisp, and better flavored cabbage for the table. The head is of medium size, quite round, and is surrounded by a few small outer leaves. It is very firm and fully equal to any of the late sorts in this respect. On account of its hardness it will stand in the field for a month or more without bursting and can be shipped long distances and arrive in excellent condition. Don't fail to give the new Golden Acre a trial. Pkt., 10c; 1 oz., 40c; ¼ lb., \$1.25. Postpaid.



GOLDEN ACRE



EARLY WONDER

BEETS

Early Wonder

THE MARKET GARDENER'S FAVORITE

EARLY WONDER—We recommend this splendid variety to market gardeners who desire an extra early beet of more attractive appearance than Crosby's Egyptian. The roots are very uniform, nearly globe shaped, with small top and tap root; skin dark red; flesh deep blood red and of excellent quality. Wonder retains its deep color well when stored or canned, and is becoming deservedly popular with both home and market gardeners. Pkt., 5c; oz., 10c; ¼ lb., 25c. Postpaid.

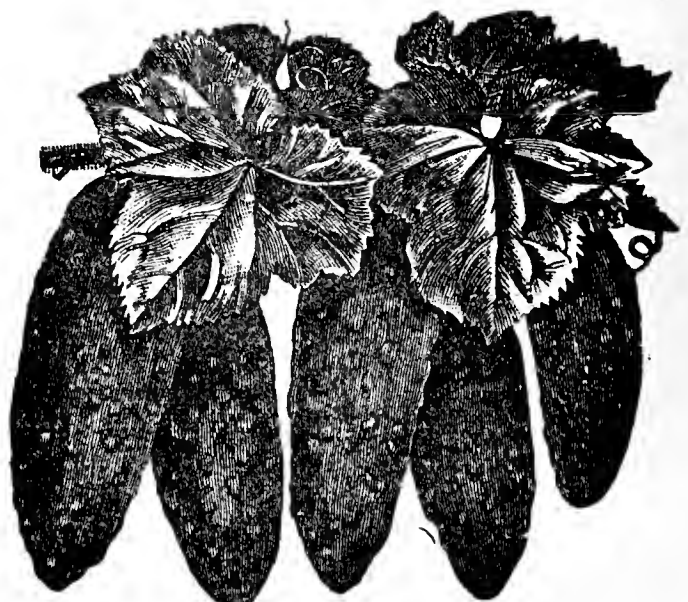
THE BEST FOR A PICKLE
SNOW'S PERFECTION

CUCUMBER

Snow's Perfection

SNOW'S PERFECTION—This very prolific and vigorous small Cucumber was developed by a large commercial pickle grower and combines the best qualities of all the small varieties of Cucumbers.

The type is shorter when ripe than the Chicago Pickle and is broad at the stem end, tapering slightly to the tip. The small pickles are dark green, cylindrical and square ended, average 4 to 5 inches in length when large enough for slicing, and are of excellent quality; but it is chiefly for producing medium-sized pickles that this variety is so highly esteemed. If the fruits are gathered as soon as large enough, the vines will continue bearing through a long season. Pkt., 5c; oz., 10c.

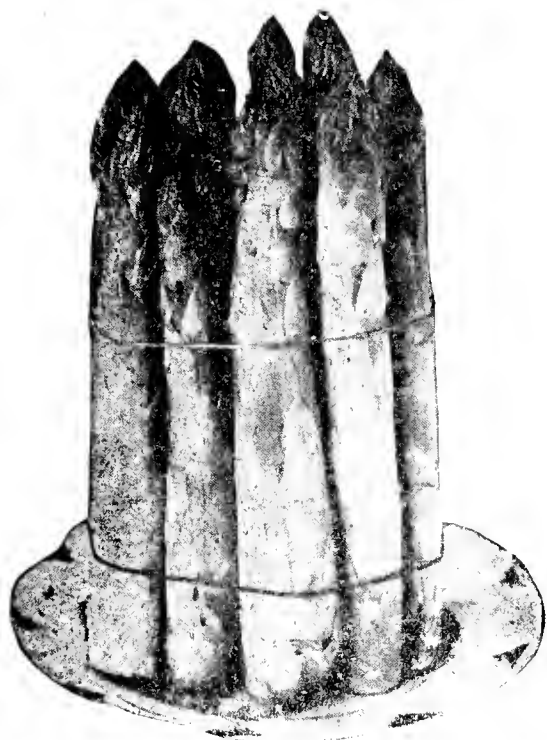


TESTED GARDEN SEEDS

MARKET GARDENERS

And those using large quantities of seed should send us a list of their requirements. Prices will be furnished promptly, and we can frequently make a substantial reduction on large quantities.

All 10c Pkt. Seeds, 3 for 25c; 7 for 50c. Postpaid.



Every Home and Kitchen Garden Should Have a Bed of Asparagus.

ASPARAGUS

	Pkt.	Oz.	¼ lb.
Palmetto05	.10	.25
Conover's Colossal05	.10	.25
Columbian Mammoth white05	.10	.25
Mary Washington10	.15	.50

BEANS (Green-Podded)

	Pkt.	Lb.	5 lbs.
Round Red Valentine10	.25	\$1.10
Giant Stringless G. Pod10	.25	1.10
Full Measure10	.25	1.10
Bountiful10	.25	1.10

BEANS (Wax)

	Pkt.	Lb.	5 lbs.
Improved Golden Wax10	.25	\$1.10
Rust-Proof Black Wax10	.25	1.10
Davis White Wax10	.25	1.10

BEANS (Bush Lima)

	Pkt.	Lb.	5 lbs.
Henderson's Bush Lima10	.30	\$1.35
Burpee's Bush Lima10	.30	1.35

BEANS (Pole Lima)

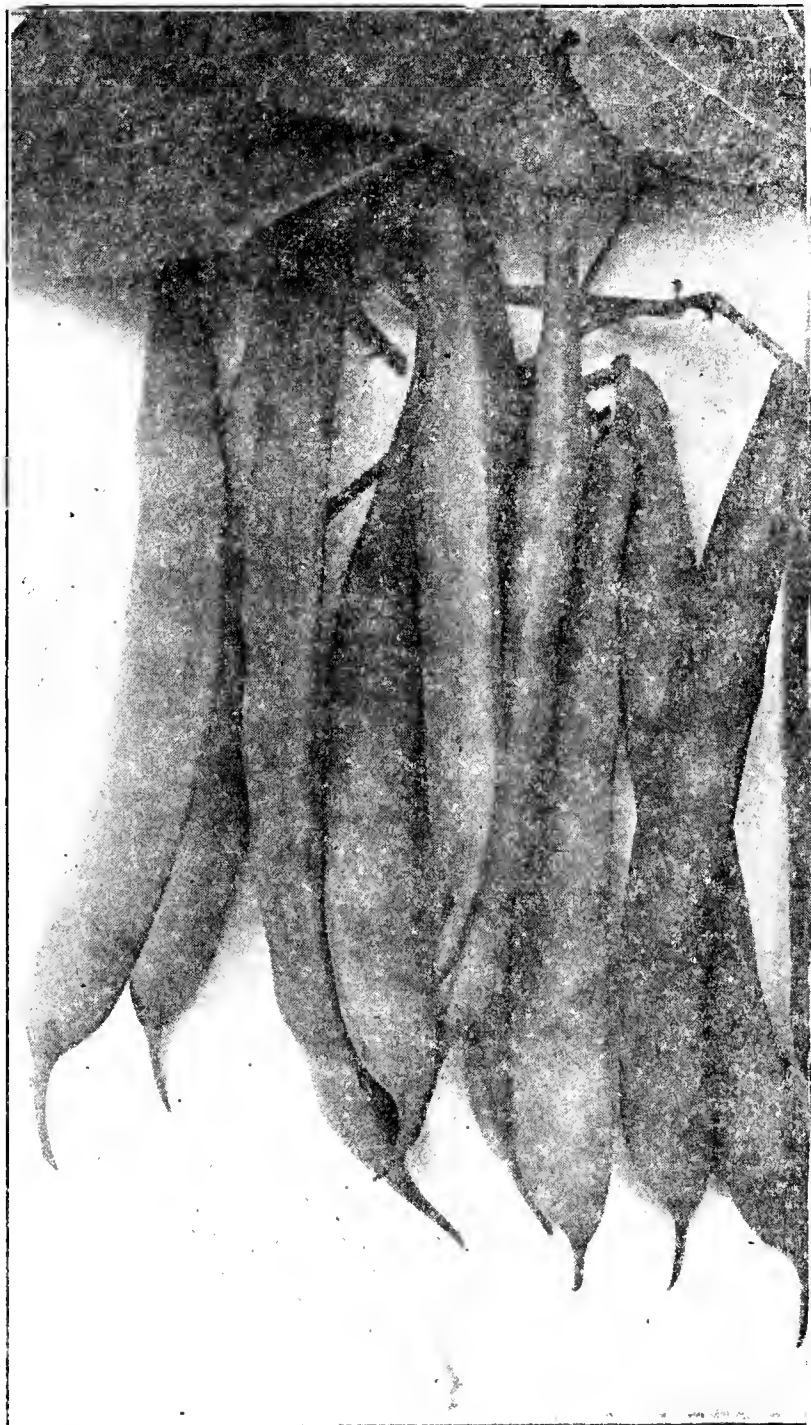
	Pkt.	Lb.	5 lbs.
Large White Lima10	.30	\$1.35
King of the Garden Lima10	.30	1.35
Carolina or Sieva10	.30	1.35

BEANS (Pole or Running)

	Pkt.	Lb.	5 lbs.
Lazy Wife10	.25	\$1.10
Dutch Case Knife10	.25	1.10
Speckled Cut-Short10	.25	1.10
Creaseback10	.25	1.10
Kentucky Wonder10	.25	1.10
Kentucky Wonder Wax10	.25	1.10
Scarlet Runner10	.25	1.10

BEANS

CULTURE—Beans are sensitive to both cold and wet, so do not plant till the ground is warm. To have a continuous supply plant every two weeks from the time the ground gets warm till the middle of August; further South they may be planted even later. Make the rows 2 and 3 feet apart, drop the beans 3 inches apart and cover 1½ to 2 inches deep. Give frequent but shallow cultivation up to blossoming time, not afterward, and never when the plants are wet. Plant in a light loamy soil that warms up quickly. One pound plants 60 feet; 100 pounds will plant an acre.



BURPEE'S STRINGLESS GREEN POD—Extremely early and hardy. Wonderful producer, round tender pods. A vigorous grower, producing round, green pods of highest quality, being absolutely stringless. It is early, a heavy yielder and valuable alike for market or home garden. Pkt., 10c; lb., 25c; 5 lbs., \$1.10. Postpaid.

ALL PACKET SEED POSTPAID.

BEETS

CULTURE—For table beets sow in drills 18 inches apart, and thin to stand 3 to 4 inches apart in the rows. Use one ounce to 100 feet of drill and cover lightly.

CROSBY'S EGYPTIAN—The earliest beet on the market. A selection from that standard market beet. Early Egyptian, which retains the earliness of the parent stock and has added thickness, giving it a most desirable shape. It is the deepest red, almost black in color, and is of finer quality than the Egyptian, being sweeter and even more tender and smoother. The most desirable sort for small beets for early market, as it is in presentable market shape quicker than any other sort. It is a very rapid grower and can be sown outside as late as July. Pkt., 5c; oz., 10c; ¼ lb. 25c. Postpaid.

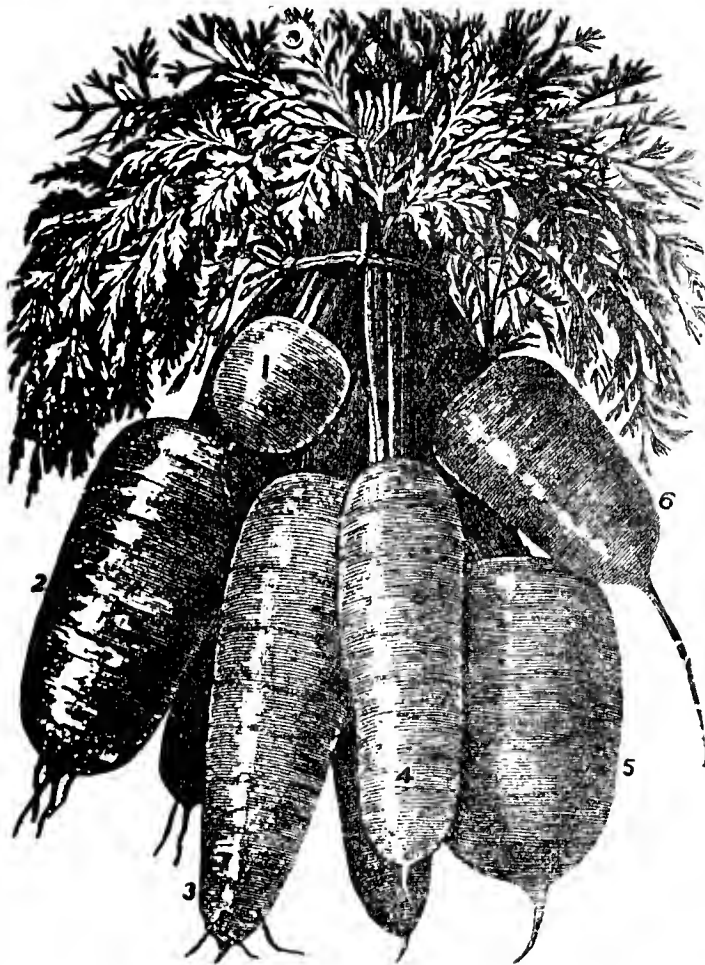
BEETS

	Pkt.	Oz.	¼ lb.
Banquet Table5	.10	.25
Egyptian Early Blood Turnip5	.10	.25
Eclipse5	.10	.25
Edmund's Blood Turnip5	.10	.25
Detroit Dark Red Turnip5	.10	.25
Improved Early Blood Turnip5	.10	.25
Long Smooth Blood Red5	.10	.25
Swiss Chard5	.10	.25

MANGEL-WURZEL

	Pkt.	Oz.	¼ lb.
Improved Mammoth Long Red5	.10	.20
Norbiton's Giant5	.10	.25
Golden Tankard5	.10	.25

CARROTS



1 Oz. to 100 Feet Drill.

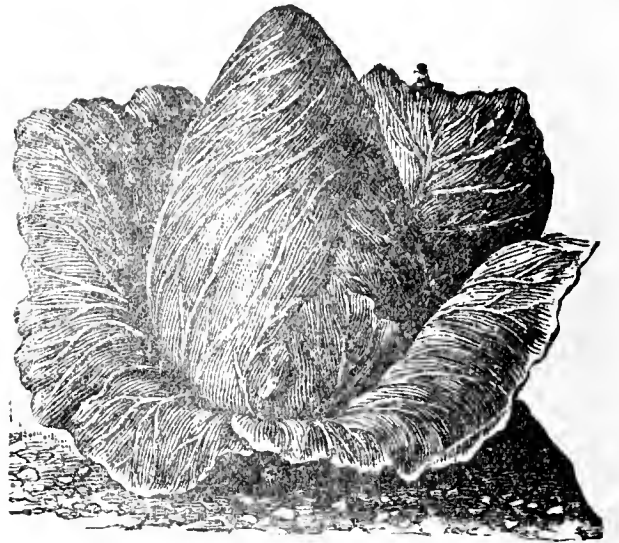
1, Oxheart; 2, Chantenay; 3, Long Orange; 5, Half Long; 6, Stump Rooted.

Sow in drills one-half inch deep, one ounce for 100 feet; three to four pounds per acre.

CARROTS

	Pkt.	Oz.	¼ lb.
Chantenay5	.10	.25
Extra Early French Forcing5	.10	.25
Long Red, Stump Rooted5	.10	.25
Ox Heart5	.10	.25
Danvers5	.10	.25
Long Orange Improved5	.10	.25

CABBAGE



EARLY JERSEY WAKEFIELD

Sow one ounce for 2,000 plants; six ounces for one acre.

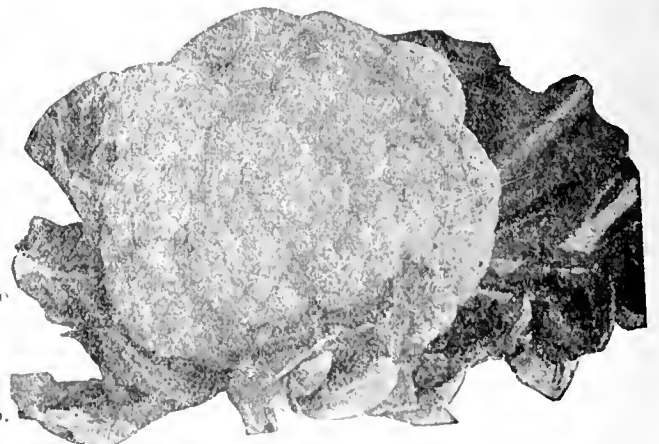
SELECT EARLY JERSEY WAKEFIELD

This extra early conical-shaped head cabbage is the best early for planting in the United States. Earliness and hard heading in this variety are most important to growers. Early Jersey Wakefield Cabbage is a specialty with us, and to secure the best seed on our growing farms, we spare no expense. We confidently offer the best Early Jersey Wakefield Seed that money can buy anywhere. Successful growers everywhere in the United States plant Early Jersey and get results that spell prosperity. More seed of this sort is planted in the United States than of all other varieties of the same type together. The heads are hard, the outside leaves small, so that close planting is possible

	Pkt.	Oz.	¼ lb.
Early Jersey Wakefield10	.20	.50
Charleston, or Large Wakefield10	.20	.50
Mammoth Red Rock10	.35	.85
Premium Late Flat Dutch10	.20	.50
Drumhead Savoy10	.20	.50
All Seasons10	.20	.50
Glory of Enkhuisen15	.40	1.25
Henderson's Succession10	.20	.50
Copenhagen Market10	.20	.50
Chinese Cabbage10	.30	

ALL PACKETS POSTPAID
See Page 31 For Complete
Garden Seed List

CAULIFLOWER



CAULIFLOWER

	Pkt.	¼ Oz.
Extra Small Leaved Erfurt25	.85
Early Snowball, true15	.75

CELERY

1 Oz. of Seed to 5,000 Plants
200 to 250 Plants Required for 100 Feet
of Row.



CELERY

	Pkt.	Oz.	¼ lb.
Giant Pascal5	.25	.75
Golden Self Bleaching (true)10	.40	1.25
White Plume05	.25	.75
Dwarf Golden Heart10	.40	1.25

COLLARDS

	Pkt.	Oz.	¼ lb.
Georgia5	.15	.25

CUCUMBER

1 Oz. to 50 Hills.

Plant in hills about 4 feet apart each way. The hills should be previously prepared by mixing thoroughly with the soil in each a shovelful of well-rotted manure.

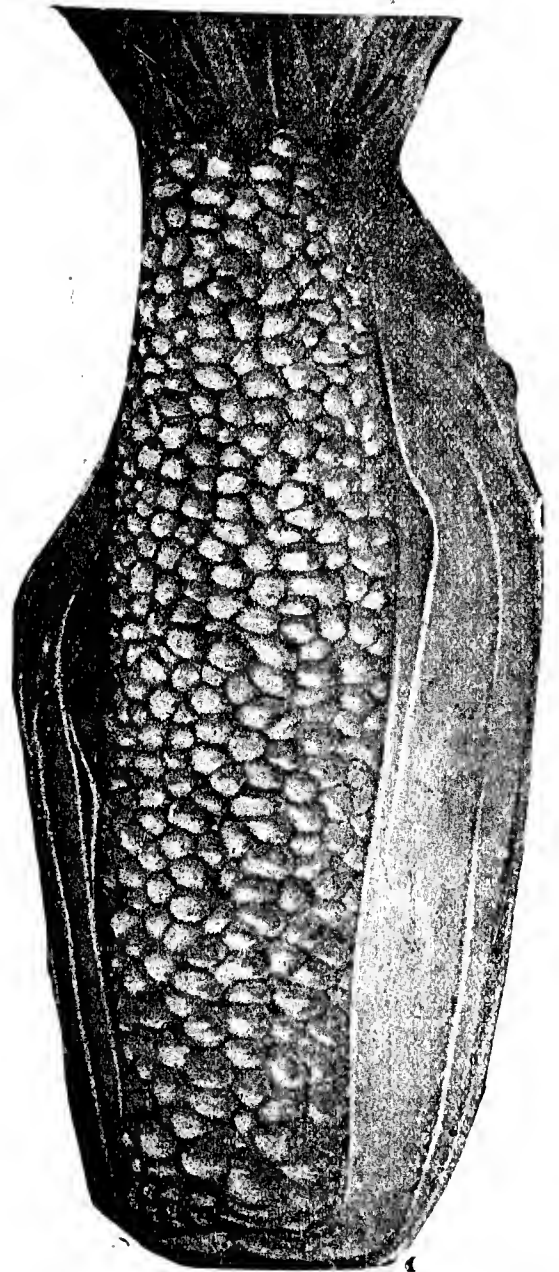
	Pkt.	Oz.	¼ lb.
Evergreen White Spine5	.10	.30
Improved Long Green5	.10	.35
Westerfield's Chicago Pickling5	.10	.30
Early Cluster5	.10	.30
Early Frame5	.10	.30
Boston Pickling5	.10	.30
Japanese Climbing5	.15	.40
Gherkin5	.20	.65

SWEET CORN

CULTURE

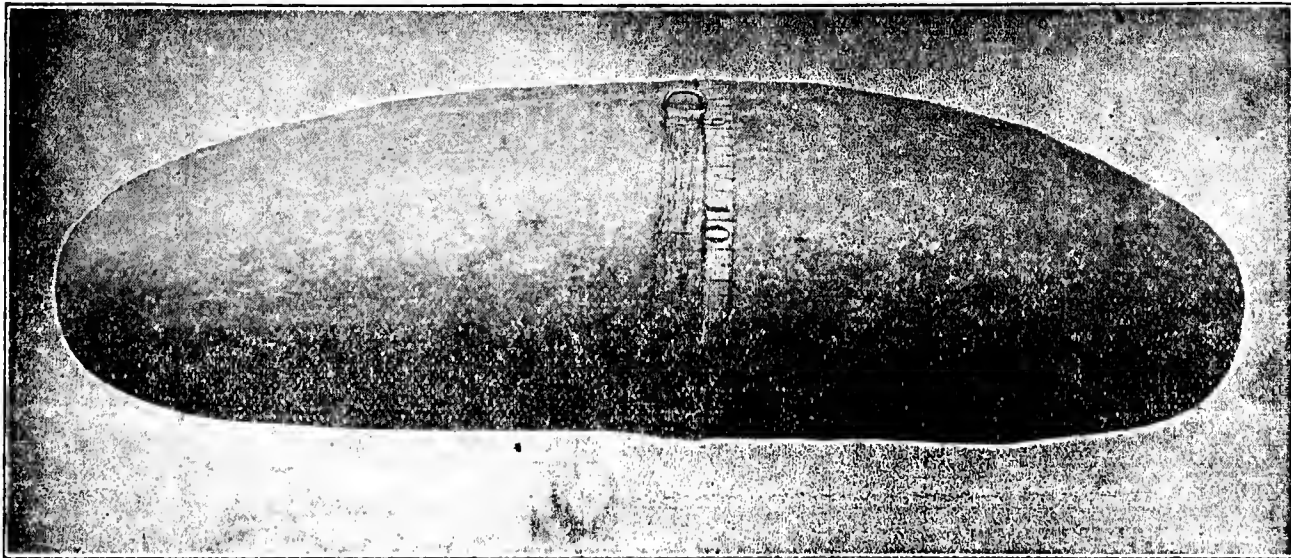
½ lb. will plant 100 hills. Sweet Corn varies greatly in hardiness, earliness, size and sweetness. The early sorts grow only 3 to 5 feet high and may be planted when the trees are starting out in leaf, in rows 3 feet apart, making the hills about 1 ft. apart. The later and sweeter varieties are more tender and should not be planted until the trees are in full leaf or the seed will rot in the ground. Plant garden corn in rows 3 feet apart, making the hills 18 inches apart in the rows.

SWEET CORN



COUNTRY GENTLEMAN

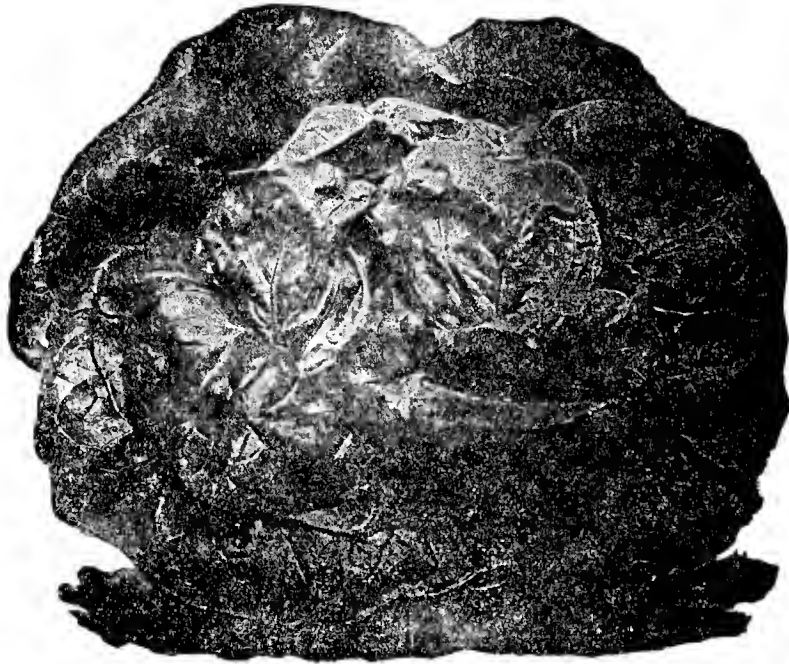
	Pkt.	1 lb.	5 lbs.
Extra Early Adams10	.25	\$1.15
Early Minnesota10	.25	1.15
Sunshine10	.30	
Stowell's Evergreen10	.25	1.15
Country Gentleman10	.25	1.15
Golden Bantam10	.25	1.15
Black Mexican10	.25	1.15
Howling Mob10	.25	1.15



FOR BUGS
BETTER
and
WORMS
on
Cucumbers
Use
SLUG
SHOT
"Cyanogas"
or
Tobacco
Dust

EARLY FORTUNE—The finest second early variety; very productive and disease resistant; fruits nine inches long, slightly tapering; flesh white, very firm and crisp, with very few seeds; color rich; dark green. Pkt., 5c; Oz., 10c; ¼ lb., 35c.

LETTUCE



WHITE SUMMER CABBAGE—A head lettuce of remarkable quality, forming a solid, fine head of good size, and will withstand heat and drought, making it a good late variety. Pkt., 5c; oz., 10c; ¼ lb., 35c. Postpaid.

	Pkt.	Oz.	¼ lb.
Grand Rapids Forcing5	.10	.35
Denver Market5	.10	.35
Black Seeded Simpson5	.10	.35
Early Curled Simpson5	.10	.35
Hanson, Improved (head)5	.10	.35
Prize Head5	.10	.35
Big Boston (head)5	.10	.35
Early Curley Silesia5	.10	.35

CHIVES

Used for seasoning, has a very strong onion flavor and is one of the earliest all-year plants to come up. Multiplies very fast. Lives forever. Clump of roots, 15c each; \$1.00 per dozen by express. By mail, 10c a dozen extra.

CHICORY

LARGE ROOTED, OR COFFEE—Sown in drills, the roots become well developed. When they are dried, roasted and ground, they become the chicory of commerce, and are used in adulterating coffee. Pkt., 10c; oz., 15c; ¼ lb., 40c. Postpaid.

CRESS

	Pkt.	Oz.
True Water10	.30
Curled or Pepper Grass5	.15

LEEK

	Pkt.	Oz.	¼ lb.
American Broad-Leaf5	.20	.60

KALE

	Pkt.	Oz.	¼ lb.
Dwarf Green Curled5	.15	.40
Dwarf Curled Scotch5	.15	.40

KOHL-RABI

	Pkt.	Oz.	¼ lb.
White Vienna5	.25	.60
Early Purple Vienna5	.25	.60

CHILLI SUPPLIES

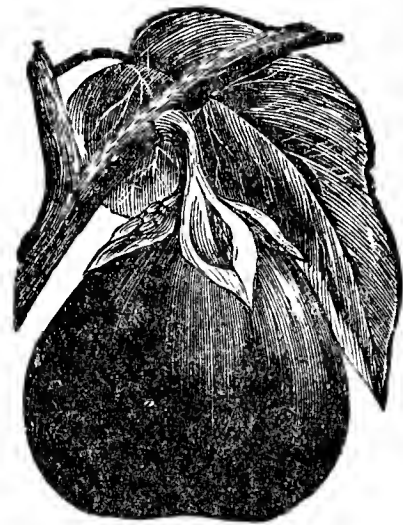
STRICTLY FRESH—NEW CROP

	Oz.	Postpaid Lb.
Comina10	.40
Chili Pepper Pods45
Chiline, Ground10	.45
Mexican Chili Powder Mixture10	.50
Chili Petine Pods15	1.00
Oregano or Mexican Sage10	.30
Garden Sage10	.35
Japanese Pepper10	.50
Mexican Garlic05	.35
Chili Beans10

PRICES SUBJECT TO CHANGE.

Recipes for making Mexican Dishes sent free on application.

EGG PLANT



EGG PLANT

	Pkt.	Oz.	¼ lb.
New York Improved10	.50	1.30
Black Beauty10	.50	1.70

ENDIVE

	Pkt.	Oz.	¼ lb.
Green Curled Mammoth05	.15	
Ever-White Mammoth05	.15	

SPECIAL OFFER

All 10c Pkts., 3 for .25
 7 10c Pkts., for .50
 15 10c Pkts., for \$1.00
 All 5c Pkts., 6 for .25

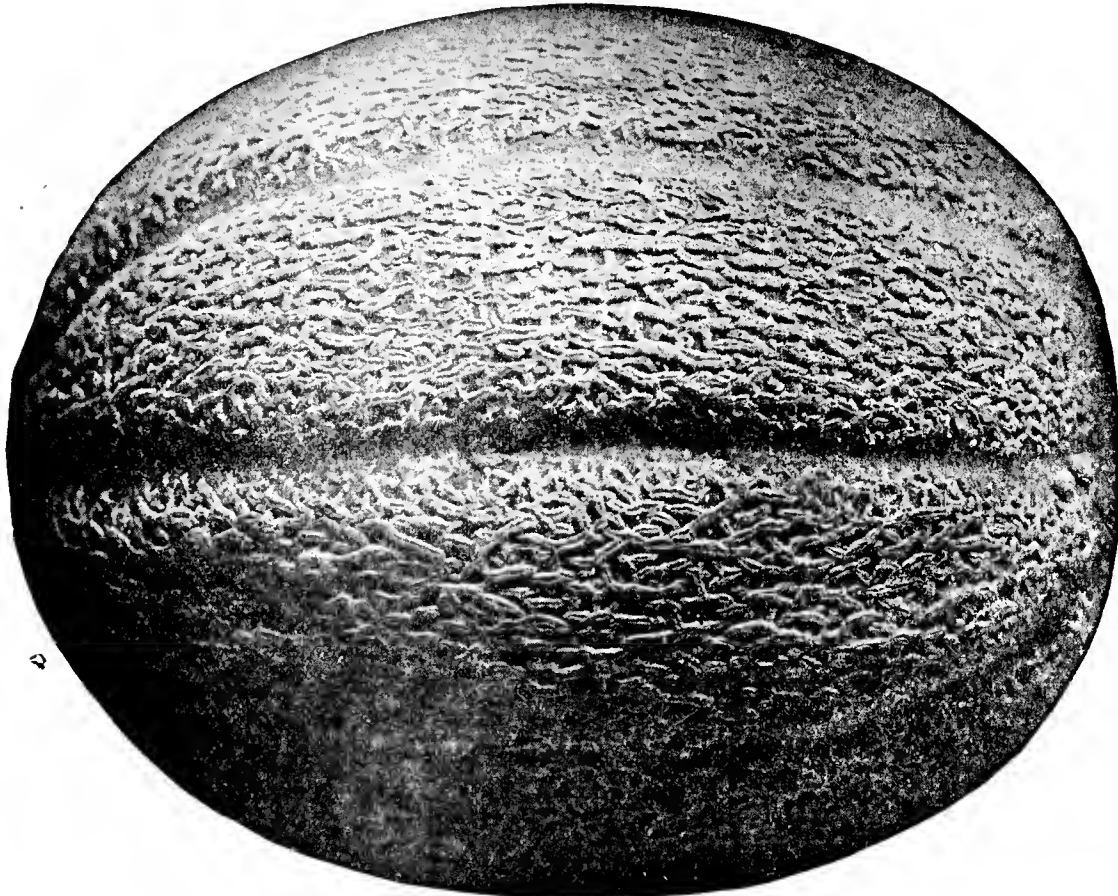
GARLIC FOR SEED—Thrives best in light, well-enriched soil. Bulbs should be planted in the fall 6 to 8 inches apart. Cultivate and store the same as onions. Much valued for flavoring soups, stews, etc. Fine bulbs.

¼ lb., 15c; lb., 50c. Postpaid.

SEE PAGE 31 FOR COMPLETE GARDEN SEED LIST.

MUSKMELON OR CANTALOUPE

CULTURE—Prepare hills, 4 to 6 feet apart, in a rich, moderately dry sandy soil, using well-rotted manure. When frost is over, plant 10 to 12 seeds in each hill about 1 inch deep, and when well up, thin out, leaving four strong plants to the hill. Pinch off the ends of the vines when about a foot long—this will make them strong and bear more freely. Give frequent but shallow cultivation till the vines cover the ground. Do not grow near cucumbers, squashes, etc. One ounce plants 50 hills; two pounds to the acre.

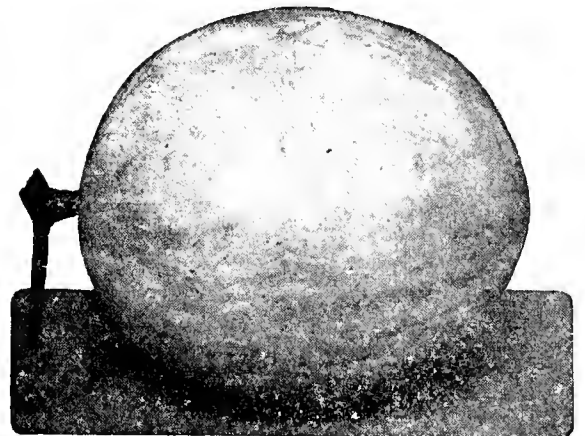


ROCKYFORD—The standard of excellence among green-fleshed melons. The flesh is thick, with small cavity; very sweet and has that spicy flavor that makes a cantaloupe so delicious. Oval shaped, slightly ribbed, well covered with fine netting and uniform in size and shape. Pkt., 5c; oz., 10c; ¼ lb., 35c; lb., \$1.00. Postpaid.

**FOR SPRAYING
MELONS
USE
TOBACCO DUST
BLACK LEAF 40**

MUSKMELON

	Pkt.	Oz.	¼ lb.	Lb.
Acme or Baltimore05	.10	.35	1.00
Chicago Market05	.10	.35	1.00
Extra Early Nutmeg05	.10	.35	1.00
Jenny Lind05	.10	.35	1.00
Emerald05	.10	.35	1.00
Hackensack Early05	.10	.35	1.00
Long Yellow Cantaloupe05	.10	.35	1.00
Champion Market05	.10	.35	1.00
Banana05	.10	.35	1.00
Honey Dew10	.15	.45	1.40
Salmon Tinted Pollock05	.10	.35	1.00
Hearts of Gold10	.20	.45	1.50
Vegetable Peach05			



HONEY DEW

MUSTARD

	Pkt.	Oz.	¼ lb.	Lb.
Ostrich Plume05	.10	.25	.60
Black or Brown05	.10	.20	.40
White05	.10	.20	.60
Chinese Curled05	.10	.25	.60
Giant Southern Curled05	.10	.20	.60

PARSNIP

CULTURE—Sow the seed thickly in rows 1½ to 2 feet apart as early in the spring as the ground can be worked

	Pkt.	Oz.	¼ lb.
Hollow Crown05	.15	.25
Long Smooth05	.15	.35
White Dutch05	.15	.35

PARSLEY

	Pkt.	Oz.	¼ lb.
Moss Curled, very fine05	.15	.35
Triple Curled05	.15	.40

OKRA

	Pkt.	Oz.	¼ lb.
Long Green05	.10	.25
White Velvet05	.10	.25



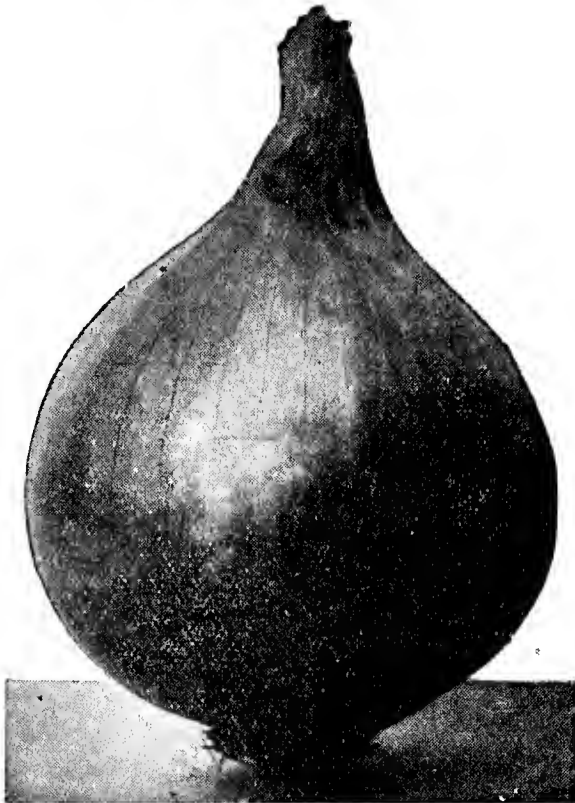
OKRA

ONION SEED

Write for Prices on Large Quantities.

Good Onions of first quality can only be produced by careful attention to details, good seed, good fertile soil, careful cultivation, harvesting and storing, but above all the first consideration is the seed. The best seed must be planted regardless of price.

1 Oz. to 100 Ft. Drill; 4 to 5 Lbs. per Acre.



ONION

LARGE RED GLOBE

LARGE RED GLOBE—A handsome globe-shaped onion of rich purplish crimson color. Aside from the white varieties, it brings the highest market price. It is a good keeper and of excellent quality. Pkt., 10c; oz., 20c; ¼ lb., 60c. Postpaid.

	Pkt.	Oz.	¼ lb.
Large Red Wethersfield	.10	.20	.50
Southport White Globe	.10	.20	.60
Yellow Danvers, flat	.10	.20	.50
Danvers Yellow Globe	.10	.20	.60
Prize Taker, or Spanish King	.10	.20	.50
White Portugal, or Silver Skin	.10	.20	.60
Yellow Bermuda	.10	.30	1.00
Crystal White Wax	.10	.35	1.25

ONION SETS—Tops, 28 lbs. per bu.; bottoms, 32 lbs. per bu. It takes 8 bu. to set an acre.

Price on application for the following varieties:

- RED WETHERSFIELD
- AUSTRALIAN BROWN
- WHITE SILVER SKIN
- YELLOW GLOBE
- POTATO ONION
- WINTER TOPS
- MULTIPLIERS
- SUMMER TOPS

BERMUDA ONION PLANTS

We can furnish the genuine Crystal White Wax and Yellow Bermuda, tied 100 to the bundle and 6,000 to the crate, at 15c per hundred and \$1.00 per thousand, postpaid.

PEPPER

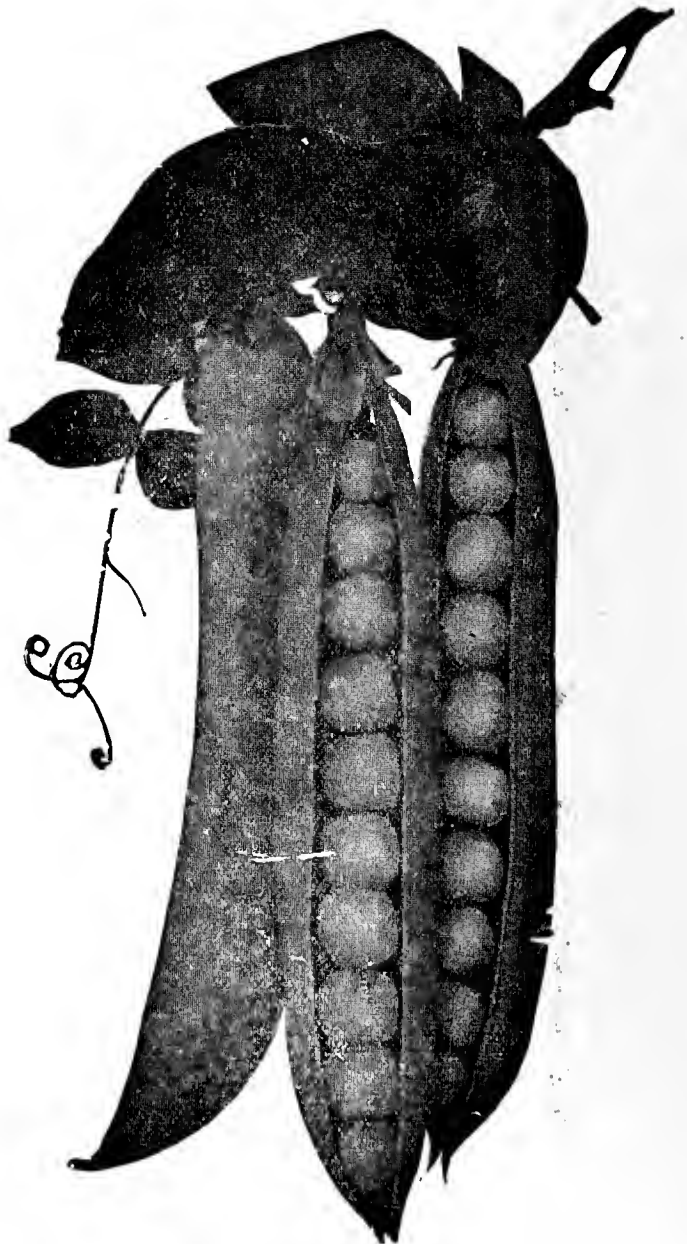
1 Ounce will Produce About 2,000 Plants.

	Pkt.	Oz.
Chinese Giant	.10	.50
Pimento	.10	.40
Large Bell, or Bull Nose	.10	.45
Cayenne, Long Red	.10	.45
Cayenne, Small	.10	.45
Sweet Mountain	.10	.35
Ruby King	.10	.45
Golden Queen	.10	.50
Red Chile	.10	.45
California Wonder	.10	.50

GARDEN PEAS

Sow Peas as early in the spring as the ground can be worked, in drills about 4 inches deep. The rows must not be nearer than 2 feet, except for the dwarf sorts. Those growing 3 feet high or more should not be nearer than 3 or 4 feet, and should have brush for their support. Avoid fresh manure and very rich soil, as they cause the vines to grow too rank. One pound will sow 40 feet of drill; 55 to 100 pounds for an acre, in drills 3 feet apart.

Wrinkled sorts marked thus *	Pkt.	Lb.	5 lbs.
Alaska, 2 foot	.10	.25	1.10
Dwarf Tom Thumb, 12-inch	.10	.25	1.10
First and best, 2-foot	.10	.25	1.10
Philadelphia Extra Early, 2-foot	.10	.25	1.10
*Bliss American Wonder, 10-inch	.10	.25	1.10
*Little Gem, 18-inch	.10	.25	1.10
*Nott's Excelsior, 15-inch	.10	.25	1.10
*Horsfords Market Garden, 2-foot	.10	.25	1.10
*Telephone, 4-foot	.10	.25	1.10
*Champion of England, 5-foot	.10	.25	1.10
*Bliss Everbearing, 2-foot	.10	.25	1.10
Large White Marrowfat, 5-foot	.10	.25	1.10
*Gradus	.10	.25	1.10
*Thomas Laxton	.10	.25	1.10
*Laxtonian	.10	.30	1.40
Dwarf Grey Sugar (Edible Pod)	.10	.30	1.40
Tall Melting Sugar (Edible Pod)	.10	.30	1.40



THOMAS LAXTON

ALL GARDEN SEED POSTPAID

RADISH

CULTURE—To be tender and crisp radishes must be grown quickly, and this requires rich soil and plenty of moisture. Commencing with the first mild spell in the spring, sow at intervals of 10 days, in a light, rich, deeply-worked soil. One ounce will plant 50 feet; 8 to 10 pounds one acre.

	Pkt.	Oz.	¼ lb.
Crimson Giant Forcing	.05	.15	.40
Early Scarlet White Tipped	.05	.10	.25
Early Scarlet Turnip	.05	.10	.25
French Breakfast	.05	.10	.25
Long Scarlet Short Top	.05	.10	.25
Iceicle	.05	.10	.25
White Vienna, or Lady Finger	.05	.10	.25
Chartier Improved	.05	.10	.25
Round Black Spanish	.05	.10	.25
California White Winter	.05	.10	.25
China Rose Winter	.05	.10	.25

SEED POTATOES

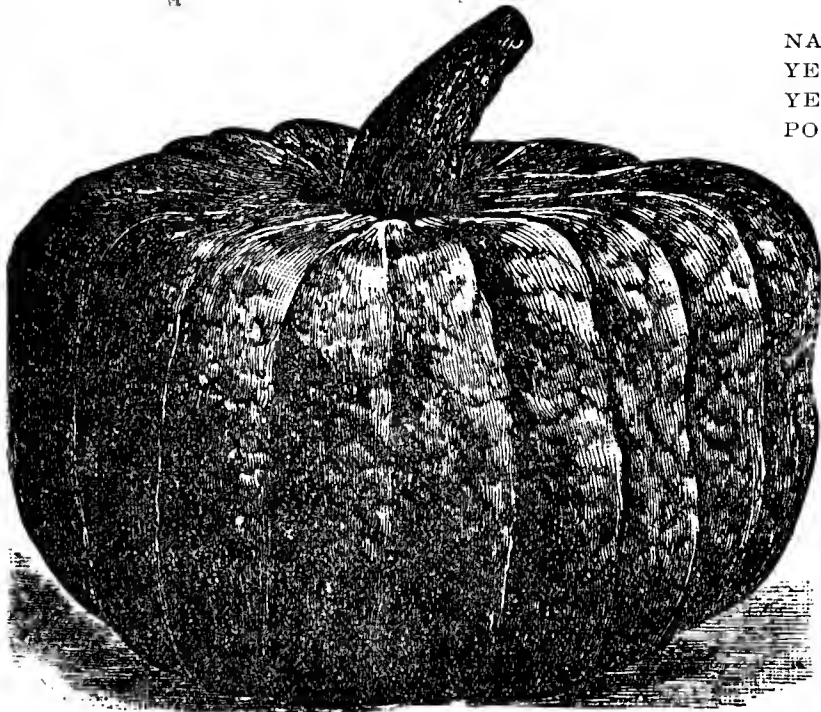
NORTHERN GROWN

Plant 8 Bu. per acre. Write for prices when ready to buy.

Certified Stock—We offer Michigan and Minnesota certified potatoes in several instances. Such stock has been inspected while growing by authorized state agents and found free from serious diseases and varietal mixture and is from vigorous fields. Sorting and grading to No. 1 grade is also required.

EARLY OHIO—
(Red River Stock)
BLISS EARLY TRIUMPH
TRUE EARLY ROSE

GREEN MOUNTAIN
BURBANK
EARLY SIX WEEKS
IRISH COBBLER

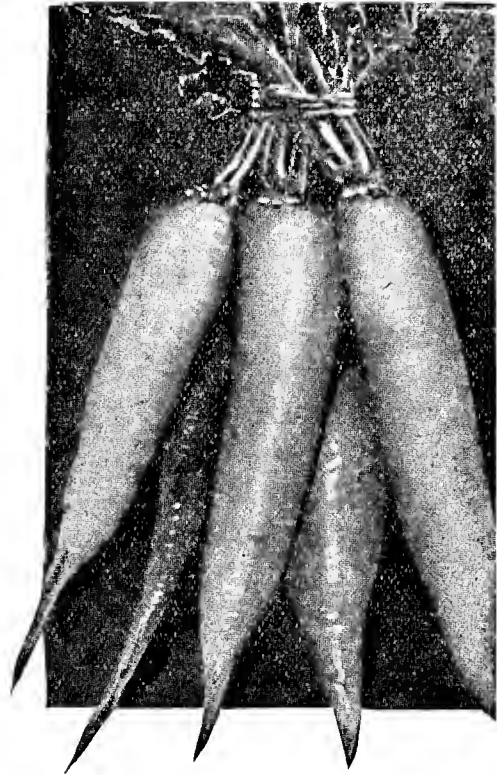


KING OF MAMMOTH

CULTURE—After danger of frost is over plant the seed in hills 8 to 10 feet apart each way, dropping about a dozen seeds in a hill. The soil should be made as rich as possible. If planted with corn, 2 or 3 seeds a rod apart each way will be sufficient. When danger from bugs is past, thin to 3 plants to a hill. Use 3 to 4 pounds of seed per acre; ¼ pound for 75 hills.

PUMPKINS

	Pkt.	¼ lb	1 lb
Common field, stock	.05	.20	.50
Kentucky Field, stock	.05	.20	.50
Large Cheese, all purpose	.05	.20	.50
Tennessee Sweet, for pies	.05	.30	.90
Japanese Pie, for pies	.05	.30	.90
Jonathan, for pies	.05	.30	.90
King of Mammoth, for pies	.05	.30	.90
White Cushaw, for pies	.05	.30	.90
Striped Cushaw, for pies	.05	.30	.90



Radish

SPARKLER
EARLY
SCARLET
TURNIP
WHITE
TIPPED

Handsome, early, round sort; bright scarlet at top, shading to white at bottom; medium size, crisp and tender; fine for first early planting; not unusual to have Radishes in 18 days from time of planting.

Pkt., 5c;
oz., 10c;
¼ lb., 25c
Postpaid

THE ICICLE

SEED SWEET POTATOES

Owing to the perishable nature of Sweet Potatoes, our responsibility ceases upon delivery to railroad company and receipted for in good condition.

Write for prices on the following varieties:

Yellow Kinds	Red Kinds
NANCY HALL	RED NANSEMOND
YELLOW NANSEMOND	RED JERSEY
YELLOW JERSEY	RED BERMUDA
PORTO RICO YAM	White Kinds
	BRAZILIAN
	SOUTHERN QUEEN

Plants of the above varieties ready for shipment about April 15. Write for prices.

POPCORN (Shelled)

JAPANESE HULLESS—A dwarf growing corn. Heavy yielder. Pkt., 10c. Postpaid.

WHITE RICE—Most popular for general use, white, sharp-pointed kernels. Pkt., 10c. Postpaid.

DYNAMITE—Fine yellow variety. Pkt. 10c; postpaid.

Write for prices on larger quantities.

PEANUTS

This crop is naturally adapted to a light, sandy land. When properly cared for, it will yield a good profit as a market crop or as pasturage for hogs. Shell the seed before planting, and plant in rows 3 feet apart, hills 10 inches apart. Peanuts should be planted in May or June.

	Lb.	5 lbs.
Tennessee Red	.25	\$1.00
Virginia	.25	1.00
Spanish	.25	1.00

Postpaid

RHUBARB

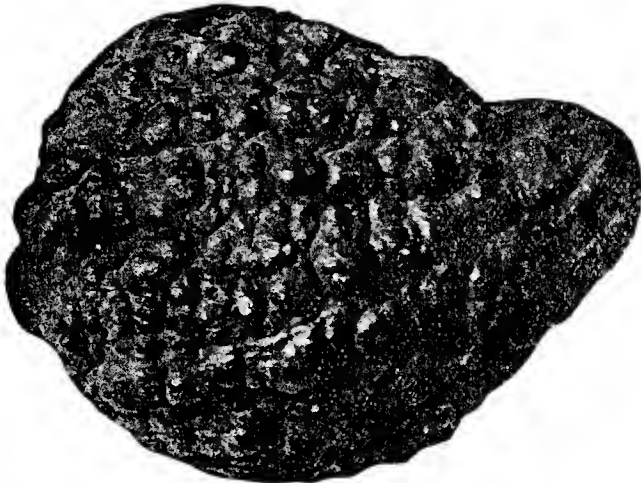
Or Pie Plant

CULTURE—Sow in spring in seed bed, in drills 1 foot apart. Cultivate well during the season. The stalks should not be cut before the third year. For immediate use order the roots, which come into use at once.

	Pkt.	Oz.
Pioneer Strawberry	.10	.25
Victoria	.10	.15
Linnaeus	.10	.15

ROOTS—10c each; \$1.00 per dozen, by mail, postpaid.

SQUASH



IMPROVED HUBBARD

SUMMER SQUASH—1 oz. plants 25 hills; 3 to 4 lbs. to an acre.
 WINTER SQUASH—1 oz. plants 10 hills; 3 to 4 lbs. to an acre.

	Pkt.	Oz.	¼ lb.
Yellow Bush	.05	.10	.30
White Bush Mammoth	.05	.10	.30
Giant Summer Crookneck	.05	.10	.30
Winter Crookneck	.05	.10	.30
Hubbard	.05	.10	.30
Warty Hubbard	.05	.10	.30
Delicious	.05	.10	.30
Sweet Potato	.10	.20	

SALSIFY Or Oyster Plant

	Pkt.	Oz.	¼ lb.
Mammoth Sandwich Island	.10	.25	.75

SPINACH

We handle immense quantities of Spinach Seed for a critical market garden and truck farm trade, for a succession the seed may be sown early in April and again in May in drills 1 foot apart and 1 inch deep, properly thinning out when plants are an inch in the leaf. For the earliest spring crop, sow from first to middle of September, protecting the crop through the winter with a light covering of straw or leaves. One ounce for 100 feet of drill, 10 pounds for an acre of drills. Write for prices in large quantities.

	Pkt.	Oz.	¼ lb.
Bloomsdale Savoy Leaved	.05	.10	.20
Round Thick Leaf	.05	.10	.20
Long Standing	.05	.10	.15

TOBACCO

CULTURE—A very clean piece of land is best for tobacco. It is customary to burn a piece of land in the woods for plant beds. This destroys grass, weeds and insects, adds fertility through the action of the wood ashes, and leaves the ground in good order. The seeds are sown about February and protected by plant-bed cloth to keep off tobacco flies. When large enough and weather is settled (about June), set the plants out in highly manured or fertilized soil in 3½-foot rows, 3 feet between the plants. Constant care must be given, cultivating, suckering, worming, etc. Methods of curing differ according to the variety and color; 1 ounce sows 50 square yards, sufficient to set 2 or 3 acres.

JUDY'S PRIDE—This type of White Burley is the best of any variety grown in this section. Makes the largest yield and the highest grade of leaf, which is much superior to that grown in other sections. Good, bright leaf, small stem and wonderful flavor. Pkt., 20c; Oz., \$1.00. Postpaid.

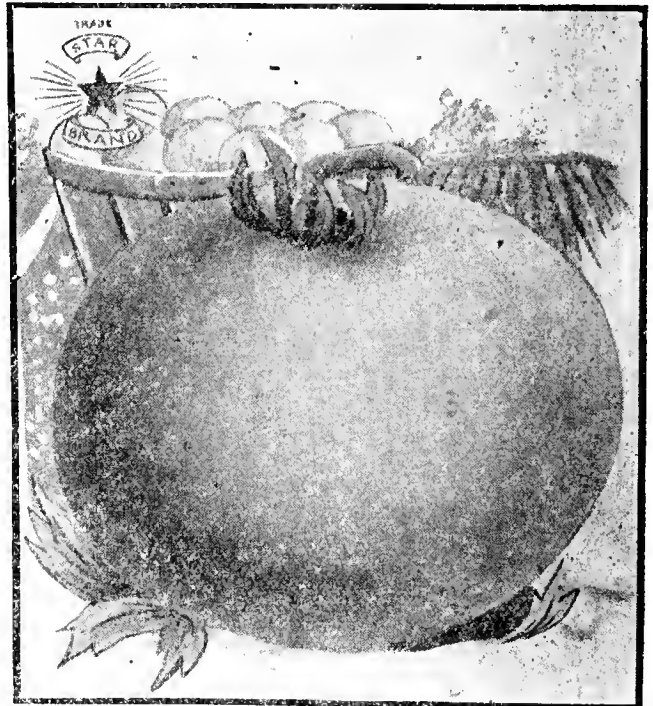
The following varieties are old standards:

RED AND WHITE BURLEY, SWEET OROCO, YELLOW PRIOR. Pkt., 10c; Oz., 50c. Postpaid.

TOMATO

CULTURE—One ounce of seed will produce from 2,000 to 3,000 plants. Sow the seed in hot-beds during March. When the plants are 2 inches high transplant into cold frames, plant boxes, paper pots or earth bands. After all danger of frost is over, set these plants into the open ground. The soil should be warm, mellow and fertile. Set plants 4 feet apart each way. Cultivate often and as long as the plants permit. By training the tomato vines on trellises or tying to stakes, the fruit will ripen better and be of finer flavor. A wire fence is a good support. When frost is feared in the fall, pull the laden vines and hang in a shed or cellar and many will continue to ripen.

Special Prices on Tomato Seed To Cannery



MARGLOBE—Earliest wilt resistant variety. This fine tomato is the result of a crossing of the Early Marvel with the fine flavor and form of the Globe. The meat is solid, has very few seeds, non-acid and has a rich red color, is excellent for local market and will probably become one of the leading canning varieties. Pkt., 10c; Oz., 50c; ¼ lb., \$1.50. Postpaid.

TOMATO

	Pkt.	Oz.	¼ lb.
John Baer	.10	.25	.75
Greater Baltimore	.10	.25	.75
New Stone	.10	.25	.75
Matchless	.10	.25	.75
Red Rock	.10	.25	.75
Dwarf Stone	.10	.40	1.20
Acme	.10	.40	1.20
Dwarf Champion	.10	.40	1.20
Earliana	.10	.30	1.00
Crimson Cushion	.10	.50	1.50
Ponderosa	.10	.50	1.50
Pear Shaped Red	.10	.40	
Bonny Best	.10	.40	1.20
Chalk's Early Jewell	.10	.40	1.20
June Pink	.10	.40	1.20

KOHL RABI

	Pkt.	Oz.	¼ lb.
Early White Vienna	.05	.25	.60
Early Purple Vienna	.05	.25	.60

WATERMELONS

To raise good Watermelons it is essential that the plants have a good start, and it is important to prepare hills about 6 feet apart, by thoroughly working into the soil an abundance of well-rotted manure—hen manure, sheep manure, or other forms rich in nitrogen, being most desirable. Over this highly manured soil put 4 to 6 inches of fresh earth and plant the seeds in this, covering them about an inch deep. It is important that the seed should not be planted before the ground becomes warm and dry, as the young plants are very sensitive to cold and wet. Put 4 or 7 seeds in a hill. 1 ounce for 30 hills; 4 to 5 lbs, for an acre.

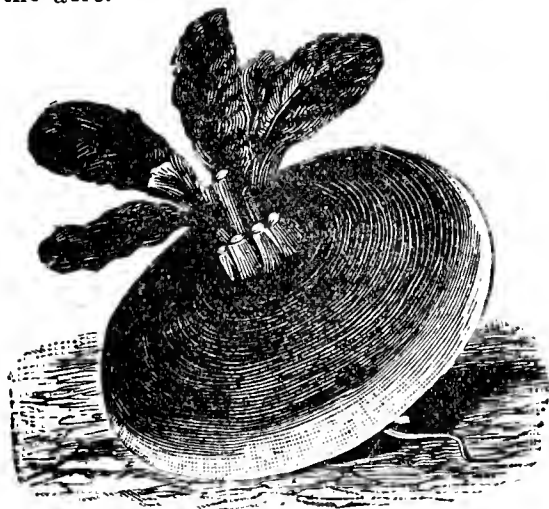


	Pkt.	Oz.	¼ lb.	lb.
Sweetheart	.05	.10	.25	.75
Georgia Rattlesnake or Gypsy	.05	.10	.25	.75
Kolb's Gem	.05	.10	.25	.75
Mountain Sweet	.05	.10	.25	.75
Peerless, or Ice Cream	.05	.10	.25	.75
Florida Favorite	.05	.10	.25	.75

	Pkt.	Oz.	¼ lb.	lb.
Alabama Sweet	.05	.10	.25	.75
Halbert's Honey	.05	.10	.25	.75
Tom Watson	.05	.10	.25	.75
Irish Gray	.05	.10	.25	.75
Improved Kleckley's Sweet	.05	.10	.25	.75
Gray Cuba	.10	.15		

TURNIP

CULTURE—For early use sow very thinly in March or April in drills from 12 to 15 inches apart; thin out to 6 inches in the rows. For fall or winter crop, sow in July and August. The old saw: "On the twentieth of July, sow your turnips, wet or dry," is good advice and sow very sparingly—one seed to the inch is enough. The Rutabagas are grown for feeding stock, and are also excellent for the table. One ounce will sow 150 feet of drill; 1 to 1½ lbs. to the acre.



PURPLE-TOP STRAP-LEAVED

	Pkt.	Oz.	¼ lb.	lb.
Extra Early Purple Top Milan	.05	.15	.30	\$1.00
Extra Early White Top Milan	.05	.15	.30	1.00
Early White Flat Dutch	.05	.10	.20	.60
Purple Top Strap Leaf	.05	.10	.20	.60
Purple Top White Globe	.05	.10	.20	.60
Pomeranian White Globe	.05	.10	.20	.60
White Egg	.05	.10	.20	.60
Amber Globe	.05	.10	.10	.60
Cowhorn	.05	.10	.20	.60
Yellow Globe	.05	.10	.20	.60
Seven Top	.05	.10		

RUTABAGA, OR SWEDISH TURNIP

	Pkt.	Oz.	¼ lb.	lb.
American Purple Top	.05	.10	.25	.75
White Russian	.05	.10	.25	.75

HERBS

	Pkt.	Pkt.	
Basil Sweet	.10	Sage	.10
Caraway	.10	Summer Savory	.10
Dill	.10	Sweet Marjoram	.10
Fennel	.10	Sweet Thyme	.10

VEGETABLE PLANTS AND ROOTS

We have the best equipped Greenhouses and Trial Gardens in the Southwest for growing plants. 45,000 square feet of glass.

In their proper seasons we shall have large quantities of all kinds of vegetable plants of our own growth. Give us ample time to select, pack and ship your order. By doing so you will secure better plants. Should we be sold out of the variety of plants ordered, we will send a nearly similar kind instead. They will be carefully packed and will carry long distances. Plants by mail at purchaser's risk. No charge for packing, etc. Special prices to growers and canners.

Transplanted Plants will be sent unless otherwise stated on your order.

CABBAGE—Frost Proof	Doz.	100	1000	Ready
Transplanted, home grown	.15	.75	6.00	Feb. 15
Transplanted, seed bed		.60	4.50	April 1
Tomato, Transplanted	.15	.85	7.50	April 1
Tomato for Canners, seed bed	.40	2.50	May 20-July 15	
Peppers, Transplanted	.25	1.50		April 1
Cauliflower, Transplanted	.25	1.50		Feb. 15
Sage, Transplanted	.25	1.50		Feb. 15
Egg Plant, Transplanted	.25	1.50		March 15
Celery	.10	.50	4.50	April 1
Sweet Potatoes, Standard		.45		Feb. 15
Sweet Potatoes, Nancy Hall		.50	4.50	April 1
Parsley	.25	1.50		April 1
Onion Plants, Bermuda		.20	1.25	
Chives, per bunch, 10c	1.00	5.00		
Rhubarb Roots, large clumps—				
Each	.10c	1.00	5.00	
Asparagus Roots	.25	1.50		
Horseradish Roots	.15	1.00		

FLOWERS

“A Spot That Is Magnificent in July May Be a Desert in August Unless the Garden Is Wisely Planned.”

The soil best adapted for flowering plants generally is a light, pliable loam, containing a sufficient amount of sand to render it porous. Many flowers are better if produced on plants of vigorous growth, hence a portion of the garden should be prepared by deep digging, thorough pulverization and liberal enriching with large quantities of well-rotted manure. Since some other varieties produce the largest and finest colored flowers when grown on rather light, poor soil, a portion of the garden should not be enriched.

Cultural directions are given on the packets.

Plants are usually divided into three classes: Annuals (A), Biennials (B), and Perennials (P). Annuals are plants which normally live but a single season. Biennials are plants living two years; particularly those which do not bear flowers and fruit until the second season. Perennials tend to live from year to year.

SEEDS FOR SPECIAL PURPOSES

A TABLE DESIGNED TO ASSIST IN MAKING SELECTIONS OF SUITABLE VARIETIES:

For Beds and Borders—Ageratum, Antirrhinum, Asters, Calendula, Calliopsis, Canna, Candytuft, Celosia, Coleus, Chrysanthemums, Dianthus, Eschscholtzia, Marigold, Nasturtiums, Pansy, Petunia, Phlox, Dwarf Poppy, Salpiglossis, Salvia, Stock, Verbena, Zinnia.

Fragrant Flowers for Bouquets—Alyssum, Candytuft, Carnation, Heliotrope, Lavender, Mignonette, Nasturtium, Dwarf; Nicotiana, Pinks, Stocks, Sweet Peas.

For Backgrounds and Centers—Antirrhinum, Asters, Balsam, Canna, Cardinal Climbers, Castor Beans, Cosmos, Delphinium, Hollyhock, Helianthus, Marigold, Marvel of Peru, Nicotiana, Salvia, Sweet William.

For Edgings to Beds and Walks—Ageratum, Dwarf; Alyssum, Dwarf; Aster, Dwarf; Bellis, Candytuft, Dwarf; Cockscomb, Dwarf; Lobelia, Marigold, Dwarf; Myosotis, Nasturtium, Dwarf; Phlox, Dwarf; Portulacca, Zinnia Dwarf.

For Partially Shaded Locations—Canterbury Bells, Myosotis, Pansy.

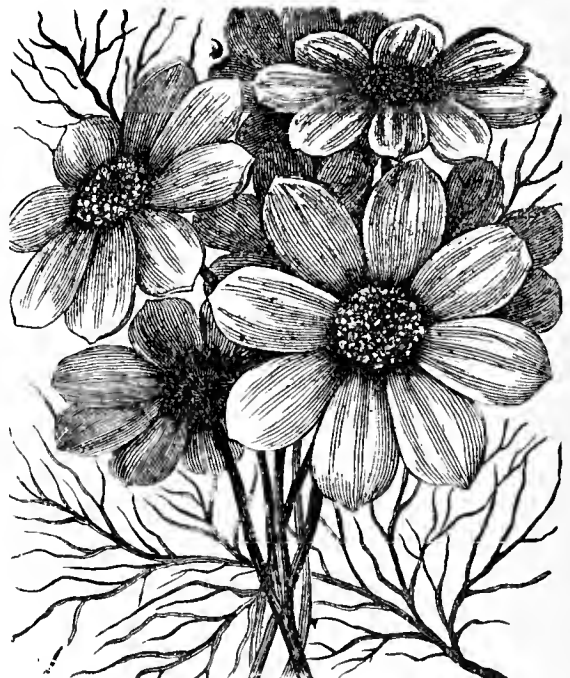
Climbing Vines—Canary Vine, Cobea, Cypress Vine, Dolichos, Japanese Hop, Kudzu Vine, Moon Flower, Morning Glory, Nasturtium, Tall; Sweet Peas, Thunbergia, Wild Cucumber.

For Boxes and Baskets—Alyssum, Asparagus Fern, Lobelia, Dwarf Nasturtium, Petunia, Smilax.

	Pkt.
Ageratum, Dwarf Blue (A).....	.10
Alyssum, Sweet Little Gem (A).....	.10
Amaranthus, Tricolor (A).....	.10
Asters, Giant Branching, Mixed (A).....	.10
Asters, Giant Crego Mixed.....	.10
Asters, Giant California Pink.....	.10
Asters, Giant Crimson10
Asters, Giant Lavender10
Asters, Giant Rose10
Asters, Giant White10
Asters, Giant Purple10
Asters, Sunshine Golden15

ASTER PLANTS—Bedding out plants on sale after the first of May at 50c per doz. Postpaid.

Balloon Vine (A).....	.05
Balsam, (Lady Slipper) Mixed (A).....	.10
Calendula, Orange King (A).....	.05
Canterberry Bells, Single Mixed.....	.10
Canterberry Bells, Double Mixed.....	.15
Calliopsis, Dwarf Mixed (A).....	.10
Candytuft, Fine Mixed (A).....	.05
Carnation, Marguerite Mixed (A).....	.10
Canary Bird Flower (A).....	.10
Cardinal Climber (A)10
Castor Oil Beans, Mixed (A).....	.05
Celosia or Cockscomb05
Centaurea (Bachelor's Button or Corn Flower (A)....	.05
Double Blue10
Centaurea Candissima (Dusty Miller).....	.10
Cosmos, Mammoth Mixed (A)10
Cosmos, Separate Colors10
Coboea Scandens (A).....	.10
Cypress Vine, Mixed.....	.10
Dahlia (A)05
Daisy, Shasta (P)05
Daisy, Double (P)05
Dianthus (Pinks), Double Chinese Mixed.....	.05
Dianthus Barbatous, Sweet William (P).....	.05



	Pkt.
Delphinium, Belladonna10
Delphinium, Bellamosum10
Delphinium, Giant Hybrids Mixed.....	.10
Digitalis (Foxglove), Mixed.....	.10
Eschscholtzia, Choice Mixed.....	.10
Forget-Me-Not (Myosotis) (P).....	.10
Four-o'Clock, Mixed05
Gaillardia, Single Mixed10
Gaillardia, Double Mixed10
Gaillardia, Perennial Mixed10
Godetia (A)10
Gomphrena (Globe Amaranth) (A).....	.10
Gourds, Mixed05
Gypsophila (Baby's Breath) (A).....	.10
Helianthus or Sunflower (A).....	.05
Helichrysum, Mixed Colors.....	.05
Hollyhock, Double Mixed10

NOVELTIES IN FLOWER SEEDS FOR 1934

IMPROVED NEW GIANT CALIFORNIA SUNSHINE

Finest Mixed

This wonderful Aster is a decide dimprovement over the old California Sunshine. The clear and beautiful colors are varying shades of Enchantress-pink, Apple-blossom, Deep Rose, Blue and Lavender. A dual-tone effect is obtained through contrasting light-yellow and blue centers. The outer or guard petals are somewhat loosely placed, creating an airy, lace-like effect which is altogether charming.

The flowers measure four to five inches across, with heavy stems fully eighteen to twenty inches long. We strongly recommend its adoption in place of the older type, both for florists' use and as a garden variety. —Pkt. 15c.

NEW ASTER Indian Summer

We are fortunate in being able to introduce a new Aster of distinctly Crego type, the blooms measuring 4½ to 5 inches in diameter. Its color is identical with the favorite Continental color, Cinnabar. The flowers are very double, with attractively curled and twisted petals. We recommend this as a worthy addition to the Crego collection. Pkts., 15c.

CARNATIONS

Chabaud's Enfant de Nice

This fine novelty comes true from seed. The plants are robust and upright in habit, free blooming, producing large double flowers on long sturdy stems.

Red, per Pkt. -----	20c
Rose, per Pkt -----	15c
Salmon, per Pkt. -----	15c
White, per Pkt. -----	15c
Mixed, per Pkt. -----	10c

ESCHSCHOLTZIA CALIFORNICA POPPY

Salmon Beauty—Double

Beautiful double salmon, not variable. This novelty, offered by us for the first time this year, is salmon both inside and out. Very distinct. Pkts. 15c.

CALENDULA— Golden Radio

We have succeeded in introducing a golden Calendula containing all the attractive characteristics of that outstanding introduction Orange Radio. It is our belief that this Calendula, Golden Radio, will meet with the same unanimous welcome by all growers. Pkts., 15c.

NEW MARIGOLD GUINEA GOLD

A distinct type of graceful, pyramidal habit, growing 2 to 2½ feet high, and producing flowers 2 to 2½ inches across, of a brilliant orange with double ruffled, loose-leaf petals. This variety has been accepted as a valuable cut flower for florists' use and is now in great demand. Pkt., 15c.

Springfield Seed Co's. New Double Sweet-Scented Nasturtium Golden Gleam

Awarded Gold Medal at Atlantic City Flower Show, 1931.

Selected for Trial at Wisley, 1932.

The plant form a vigorous, large bush which throws out short runners, averaging eighteen inches. The flowers commence as soon as the plant nears complete development, and at the time it is in full bloom the entire plant, including the runners, is a blaze of color. The large, golden-yellow flowers average two and one-half to three inches across. They are borne on erect, stiff stems six inches in length. Consequently the flowers stand well above the foliage, an arrangement which adds immeasurably to the showy appearance of the plant.

When well grown the remarkable formation of the petals gives the flowers a fully double appearance which is most attractive. An ordinary sized bouquet, when allowed to remain in a room for a short period of time, will fill the room with fragrance.

Through the courtesy of Mr. William Cuthbertson of Messrs. Dobbie & Co., this novelty was exhibited at the Chelsea Flower Show, London, where it met the approval of noted horticulturists.

Samples distributed among Botanical Gardens and Trial Grounds last season resulted in unanimous proclamation of the value of Golden Gleam as an outstanding and worthwhile novelty.

Golden Gleam was distributed last season to over three hundred customers throughout the world. We predict a very heavy demand for the season of 1934 and advise placing your order early to assure delivery.

Price per packet15c

"MOON FLOWER" IPOMEA— New Double Ipomea Rose Marie

We have pleasure in offering an early, free flowering double form of Moon Flower. Flowers are beautiful shade of deep rose of double and semi-double form. We predict Rose Marie will become as popular as Ipomea Heavenly Blue is today....Pkt. 15c.

ZINNIA— CROWN O' GOLD MIXTURE

This aristocrat among Zinnias retains its place as an outstanding novelty.

Each petal of the flower is overlaid with a deep golden yellow at the base, while carrying out the individual flower color at the tip. The color range includes the popular florist shades: Old rose, cream, yellow, carmine red, pink, etc. Pkt. 15c.

ZINNIA— EARLY WONDER

The first of a new race of dwarf, early flowering Zinnias, producing masses of Pumila type flowers on long stems. Pkt. 15c.



PETUNIAS

PETUNIA, Ruffled Giant ..	Pkt. .25
" Rosy Morn, Select.....	.10
" Fine Mixed10
" Balcony, Mixed25
" Double, Mixed25
HELIOTROPE (A)10
HIBISCUS (P)05
ICE PLANT (A).....	.10
JAPANESE HOP VINE (A).....	.05
JOB'S TEARS (A).....	.05
KOCHIA (Mexican Fire Bush).....	.10
KUDZU VINE (Jack-and-the-Bean-Stalk) (P).....	.10
LANTANA (A)10
LARKSPUR, Tall Double Mixed.....	.10
LATHYRUS LATIFOLIUS (Perennial or Everlasting Pea)10
LOBELIA (P)10
LOVE IN A MIST, OR NIGELLA (A).....	.10
MARIGOLD, Tall African.....	.05
" Dwarf Double French Mixed.....	.10
MIGNONETTE, Sweet Scented.....	.10
MOMORDICA, Balsam Apple.....	.10
MORNING GLORY, Japanese Mixed.....	.05
MOONFLOWER10
NASTURTIUMS, Dwarf Mixed, Oz., 20c.....	.10
" Tall Mixed, Oz., 20c.....	.10
PANSY, Giant Trimardeau, Mixed.....	.10
" Trimardeau, Separate Colors.....	.10
PANSY PLANTS—Mixed colors of the choicest varieties, 50c per dozen. Postpaid.	
PHILOX DRUMMONDI GRANDIFLORA.....	.10
" STAR QUEDLINBURG05
POPPY, Mixed Single10
" Mixed Double10
" Shirley Mixed10
" Oriental10
PORTULACCA GRANDIFLORA (Rose Moss), Single Mixed10
PORTULACCA GRANDIFLORA, Double Mixed.....	.10

Spencer Sweet Peas

Pkt. 10c; Oz. 25c.

ROYAL PURPLE.
 MRS. TOM JONES—Deep azure blue.
 ILLUMINATOR — Bright glowing salmon tinged with orange.
 CRIMSON KING.
 WARRIOR—The best pure deep maroon.
 MISS CALIFORNIA—A rich salmon pink.
 AUSTIN FREDERICK—Color a true lavender.
 KING WHITE.
 FINEST MIXED.

	Pkt.
SCARLET SAGE, Splendens.....	.10
SCABIOSA, Grandiflora Mixed.....	.10
SNAPDRAGON, Tall Mixed.....	.10
STOCKS, Large-flowering Ten Weeks Mixed...	.10
THUNBERGIA, or Black-Eyed Susan.....	.10
TRITOMA (Torch Lily, Flame Flower, Red Hot Poker) (P)10
VERBENA, Mammoth Mixed.....	.10
VINCA, Mixed10
ZINNIA, Giant Crimson10
" Giant White10
" Giant Yellow10
" Giant Scarlet10
" Giant Flesh Pink10
" Giant Purple10
" Giant Mixed10
" Dwarf Mixed10
" Dahlia Flowered, Mixed Colors.....	.25
" Improved Giant, Mixed Colors.....	.10
" Cactus Flowered25

SPECIAL!

All 10c Pkts. 3 for...	.25
7 Pkts. for50
15 Pkts. for	\$1.00
All 5c Pkts. 6 for...	.25



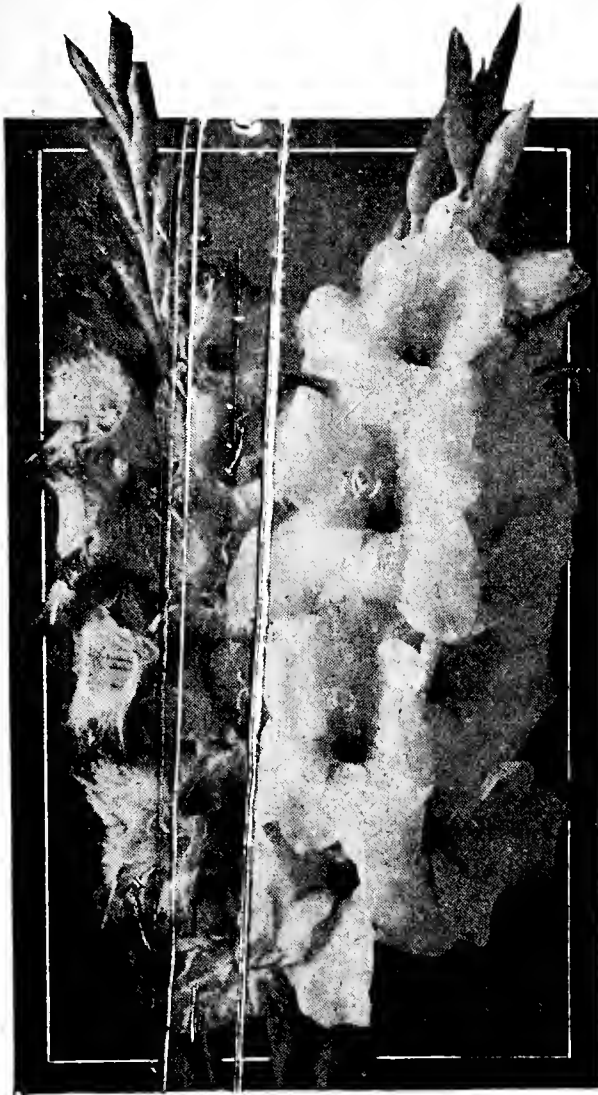
TRITOMA

SUMMER FLOWERING BULBS

Free Delivery by Mail

All bulbs offered in this list will be delivered to your doorstep anywhere in the United States by parcel post, prepaid, at prices mentioned.

Gladiolus



L'IMMACULEE—Undoubtedly the best commercial white Gladiolus in existence. Very tall spike, well set with tremendous large flowers of great substance. 5c ea.; 50c doz. Postpaid.

GOLDEN WEST—Brilliant orange with darker mottled throat. A superb flower. 5c ea.; 50c doz. Postpaid.

SCHWABEN—A magnificent amber yellow, blotched in the throat and shaded with lemon yellow. 5c ea.; 50c doz. Postpaid.

AMERICA—Soft, flesh pink, lightly tinged with lavender—full round spike and large flower. 5c ea.; 50c doz. Postpaid.

GAIETY—A gay combination of colors, bright dark rose heavily flaked with white blotches and stripes. 5c ea.; 50c doz. Postpaid.

PRINCE OF WALES—Salmon-pink. 5c ea.; 50c doz. Postpaid.

FINEST MIXED—All colors, 3 for 10c; 35c dozen.

RAINBOW MIXTURE Gladiolus (Gladioli) Bulbs (1 doz). Price 50c per box. Postpaid.

CANNAS—Ready March 1st to June 1st

KING HUMBERT—The Royal Red Canna. Height 5 feet. 15c ea.; 3 for 40c.

THE PRESIDENT—4 feet; in color a rich glowing scarlet. 15c ea.; 3 for 40c.

YELLOW HUMBERT—Fine yellow, spotted with red. Height 4 feet. 15c ea.; 3 for 40c.

ROSEA GIGANTEA—Giant flowers of soft rose. Height 3½ feet. 15c ea.; 3 for 40c.

FLORENCE VAUGHN—3 feet. Yellow with red. 15c ea.; 3 for 40c.

QUEEN CHARLOTTE—Scarlet center with orange. 5 feet. 15c ea.; 3 for 40c.

BUTTERCUP—Golden yellow. 2 feet. 20c ea.; 3 for 50c.

ALL COLORS—Mixed, dormant, 10c ea.; \$1.00 doz. Postpaid.

For \$1.00 we will mail one strong root of each of the 12 varieties of finest Cannas by parcel post to any address postpaid.

Plants and Roots
Not Prepaid
Best Sent By
Express or Bus

All Bulbs Postpaid

Bedding Plants

Can be Shipped by Express or Bus. Not Prepaid.

Plants out of 2½-inch pots, 10c ea. or \$1.00 per doz. Not postpaid.

Plants out of 4-inch pots, 20c ea. or \$2.00 per doz. Not Postpaid.

Tuberose

EXCELSIOR DWARF PEARL—Rich, waxy white, very double and remarkably fragrant. 5c ea.; 50c doz. Postpaid.

TALL DOUBLE—Flower spikes 3½ to 5 feet high. First size bulbs 5c ea.; 50c doz. Postpaid.

Caladium Esculentum

ELEPHANT'S EAR

FIRST SIZE BULBS—1½ to 2½ inch in diameter. Ea. 15c. Postpaid.

SELECT SIZE BULBS—2½ to 3 inches in diameter. Ea. 25c. Postpaid.

MONSTER SIZE BULBS—40c ea. Postpaid.

LILY OF THE VALLEY—35c doz. Postpaid.

CINNAMON VINE—A well known climber, brilliant glossy foliage, bears an abundance of fragrant flowers. often attains a height of 20 feet. 30c doz. Postpaid.

MADEIRA VINE—Tubers, 35c doz. Postpaid.

PLANT PEP—For flowers, 60c per box Postpaid.

ALYSSUM—White, for porch boxes.

ALTERNANTHERA—Red or yellow. For landscaping, designing and lettering.

COLEUS—All bedding varieties.

CHRYSANTHEMUMS—In all colors.

FUCHSIA—Assorted, 50c ea.

FEVERFEW—Thrifty, strong plants.

GERANIUMS—Out of 4-inch pots only. Double or single. All colors.

HELIOTROPES—Out of 4-inch pots only. Purple or white.

PANSIES—Large, imported varieties, in bloom. 50c doz.

PANSIES—Seed bed plants, not in bloom, 25c doz.

PARLOR IVY—Excellent plants.

SALVIA, or SCARLET SAGE—Large, flowering.

CANNAS—Growing plants, assorted, 20c ea.; \$2.00 doz.

CALADIUM—Growing plants, 5-inch pots. 50c ea.

CHINESE GIANT ASTER—Per dozen plants 50c.....

GROWING FERNS—For porch boxes, 2½-inch pot size. 10c ea.; \$1.00 doz.

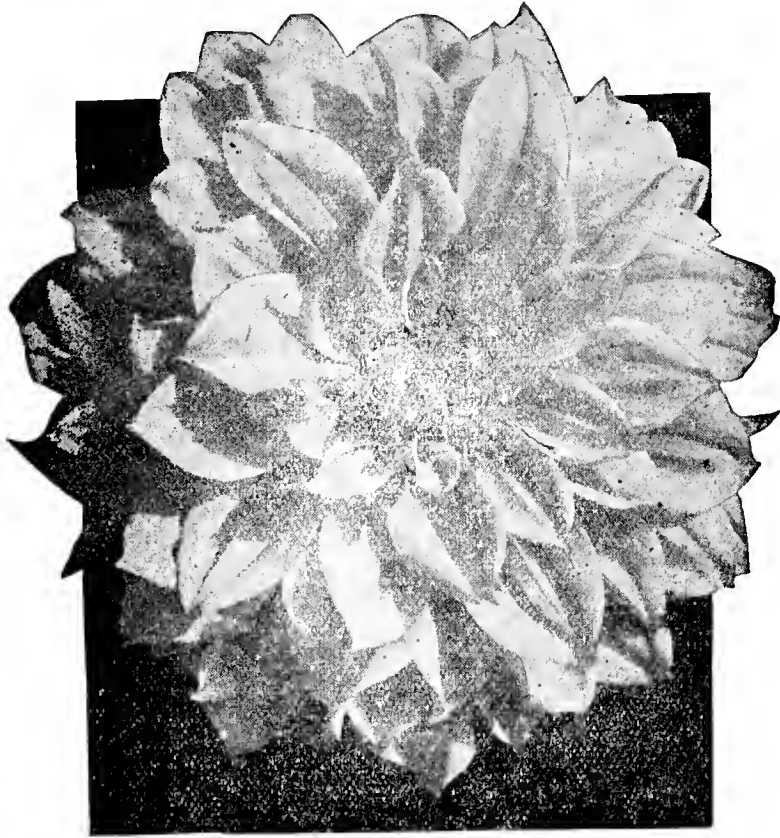
GROWING FERNS—For hanging baskets, 2½-inch pot size. 10c ea.; \$1.00 doz.

HYACINTH, TULIPS and CROCUS—For fall planting ready Sept. 1st. Send for Fall Bulb List.

SUMMER FLOWERING BULBS

Dahlias

Please bear in mind—We offer only high test Exhibition Variety Tubers, such as have been duly tested and grown by us, and are true to name and color.



- | | | |
|--|-----|-----|
| JERSEY KING—Brilliant oriental-red with
a fine suffusion | Ea. | .25 |
| JUDGE MAREAN—No. 801—Decorative.
Salmon pink with varying shadings of orange
and golden yellow | Ea. | .50 |

Decorative Dahlias

- | | Ea. | Doz. |
|--|-----|------|
| BASHFUL GIANT—A gigantic bloom.
Apricot with golden shadings..... | .50 | |
| DARLENE—(Alexander). An exquisite shade
of live shell-pink with a dainty blending
of white at center | .20 | 2.00 |
| MRS. I. DE VER WARNER—(Marean). A
blossom of soft orchid coloring..... | .50 | |
| PRIDE OF CALIFORNIA—Color crimson
red with dark full center | .40 | 2.50 |
| SHANNON—The color is a deep golden
orange overlaid with a silvery sheen..... | .50 | |
| LYNDHURST—Brightest vermilion | .20 | 2.00 |
| SYLVIA—White edged pink | .15 | 1.50 |
| WORLD'S BEST WHITE—Absolutely the
best white dahlia..... | .50 | |
| MAUDE ADAMS—White tinted pink | .20 | 2.00 |
| DELICE—(Charmet). In color a charming
bright rose-pink, suffused with lavender-
pink | .20 | 2.00 |
| JERSEY'S BEAUTY—(Decorative). A true,
pure pink | .35 | |
| A. D. LIVONI—Also known as "Ethel Vick."
The favorite old-time quilled shell-pink.. | .10 | 1.00 |
| MILLIONAIRE—Light lavender shading to
white in center | .40 | 3.50 |

Cactus Dahlias

- | | Ea. | Doz. | | Ea. | Doz. |
|--|-----|------|--|-----|------|
| AMBASSADOR—it's color is a soft yellow at
the center with salmon, amber and pink shad-
ings, gradually deepening toward the tips.. | .50 | | COUNTESS OF LONSDALE—A pleasing blend-
ing of salmon pink and amber | .20 | 2.00 |
| ELSIE—A free blooming old rose and pink
Dahlia | .20 | 2.00 | DAHLIAS—Assorted, all colors | .10 | 1.00 |

HARDY FLOWERING PERENNIALS

THESE ARE HARDY, EASILY GROWN FLOWERS THAT LIVE FROM YEAR TO YEAR. **WE**
OFFER GOOD, STRONG, OUTDOOR-GROWN PLANTS.

Daisies

- | | Ea. | Doz. |
|-------------------|-----|------|
| SHASTA | .10 | 1.00 |
| EARLY ELDER | .10 | 1.00 |

Delphinium Hybridum

(PERENNIAL LARKSPUR)

- | | | |
|---------------------------------------|-----|------|
| DELPHINIUM FORMOSUM—Dark Blue..... | .20 | 2.00 |
| DELPHINIUM BELLADONA—Light blue | .20 | 2.00 |

Peonies

Peonies are absolutely hardy and when once established will take care of themselves, making larger plants and producing greater numbers of flowers each year. Plant them as early in the Spring as possible, from 5 to 6 inches deep and from 2 to 3 feet apart. Be sure to put some well-rotted manure or other fertilizer in the bottom of each hole. Press the ground carefully around the roots, being careful not to break the crowns.

- | | Ea. | Doz. |
|-------------------------------------|-----|------|
| PEONIES, Named, 35c to 50c Ea. | | |
| PEONIES—Red | .25 | 2.50 |
| PEONIES—White | .25 | 2.50 |
| PEONIES—Pink | .25 | 2.50 |
| HIBISCUS—Giant Mallow Marvels | .20 | 2.00 |

Hollyhocks

- | | | |
|---|-----|------|
| Scarlet, Rose, Newport, Pink, Maroon,
Yellow, White, Mixed | 20 | 2.00 |
| PERENNIAL PHLOX | .20 | 2.00 |
| DIANTHUS BARBATUS | .15 | 1.50 |
| GYPSOPHILA—Perennial Baby's Breath | .20 | 2.00 |
| IRIS (German)—Perfectly hardy. They reward
you with a wealth of bloom. Well named the
"Orchid of the Garden." Blue, purple, white
and lavender | .10 | 1.00 |

HARDY FLOWERING SHRUBS

These Ornamental Shrubs are all perennials and when once established they need practically no attention for years.

	Each	Per 3	Per 10
12-18 inches -----	\$.19		\$.54
18-24 inches -----		.25	.69
2-3 feet -----		.35	.95

BUTTERFLY BUSH—

(Summer Lilac) long spikes of lavender flowers, blooms all summer.

PERSIAN LILAC—

Graceful shrub with lavender flowers, more certain to bloom than other varieties.

DEUTZIA PRIDE OF ROCHESTER—

White, drooping, bell shaped flowers in early spring.

MOCK ORANGE—

(Syringa) large, white sweet scented flowers, early spring.

GOLDEN BELL—

(Forsythia) gorgeous yellow flowers, early spring before leaves come out.

SPIREA FROEBELI—

Semi-dwarf, bright pink flowers all summer, handsome foliage.

HONEYSUCKLE—

Pretty pink flowers followed by red berries, foliage attractive.

SPIREA THUNBERGI—

Graceful shrub, feathery light green foliage, white flowers, early spring.

HYDRANGEA PEEGEE—

Large pointed white flowers turning pink as fall approaches.

TAMARIX—

Bright green, feathery foliage, delicate pink flowers, withstands extreme drought.

HYDRANGEA HILLS OF SNOW—

Large clusters of snowball-like flowers in mid summer.

WEIGELIA—

Clusters of bright pink trumpet shaped flowers, in early spring.

Spirea Vanhouttei

(BRIDAL WREATH)

America's most popular shrub and deservedly so. A gorgeous white fountain of flowers in early spring. Foliage is attractive and disease free. Useful for foundation plantings, hedges and groups. Will grow anywhere.

	Each	Per 3	Per 10
12-18 inches -----	\$.15	\$.39	\$1.00
18-24 inches -----	.20	.54	1.50
2-3 feet -----	.25	.69	2.00

DWARF SHRUBS—

Japanese Barberry — Best hedge plant. Gorgeous fall colors, red berries in winter.

	Each	Per 3
12-18 inches -----	\$.19	\$.54
18-24 inches -----	.25	.69
2-2½ feet -----	.35	.95

Red Leaf Barberry—Red leaf variety of above very striking.

	Each	Per 3
12-18 inches -----	\$.25	\$.69
18-24 inches -----	.35	.95

Spirea Anthony Waterer—Light red flowers, blooms all summer.

	Each	Per 3
12-15 inches -----	\$.19	\$.54
15-18 inches -----	.25	.69
18-24 inches -----	.35	.95

EVERGREENS

NOT BY MAIL

Our Evergreens have been transplanted several times to secure abundance of fibrous roots. The trees will be dug with a ball of earth, wrapped in burlap.

AMERICAN PYRAMIDAL ARBORVITAE—2 to 3 feet, \$2.25 Ea.
 CHINESE ARBORVITAE—2 to 3 feet, \$2.25 Ea.
 BERKMAN'S GOLDEN ARBORVITAE—24 to 30 in., \$4.50 Ea.
 GLOBE ARBORVITAE—12 by 12 inches, \$1.50 Ea.
 PINE, Mugho—A many stemmed low branch, dense, dwarf pine, \$1.50 Ea.

JUNIPER, Savin—Low and spreading in habit. An excellent border for large evergreens, and valuable for foundation plantings.
 15 inch spread\$1.75 Ea.
 18 inch spread\$2.25 Ea.

JUNIPER, Pfitzer—Gray-green, low, broad, irregular. One of the good rarer varieties.
 15 to 18 inches\$2.75 Ea.



Evergreens "Baled and Burlapped"
 Pyramidal Arborvitae (center) Globe Arborvitae (left), Chinese Golden Dwarf Arborvitae (right).

ROSES

2-Year No. 1 Plants. Field Grown, the Very Best Grade. Each, 45c; 4 for \$1.69.

EVERBLOOMING ROSES—

Betty Uprichard, copper red buds, orange-carmine when open, persistent blooming.

Columbia, bright pink, free flowerings, healthy foliage, sweetly scented, exquisite shape.

Dame Edith Helen, clear pink flowers, sweetly scented, blooms freely, vigorous grower.

Etoile de France, long lasting flowers of great fragrance, bright crimson, full centers.

Francis Scott Key, huge light red flowers, very double, blooms profusely.

Gruss an Teplitz, brilliant velvety crimson, hardy and dependable, nearly always in bloom.

Kaiserin Auguste Viktoria, exquisitely formed buds of creamy white, fragrant.

Lady Hillingdon, saffron-yellow, buds slender and pointed, foliage very good.

Los Angeles, salmon pink, shaded yellow, sweet scented, good foliage, blooms well.

Mme Caroline Testout, glistening satiny pink, large flowers, fragrant, strong grower.

Mrs. Chas. Bell, (Shell Pink Radiance) well formed, fragrant flowers, disease resistant.

Radiance, brilliant rose pink, most dependable and popular pink rose.

Red Radiance, large flowers, deep rose pink, strong grower, free bloomer.

Souvenir de Claudius Pernet, pure yellow, blooms freely and does not fade.

Talisman (new) apricot yellow and deep pink, free flowering, popular for cut flowers or for garden.

CLIMBING ROSES—

Climbing American Beauty, deep rose pink, free bloomer.

Dr. W. Van Fleet, vigorous grower, long pointed buds of rich flesh pink.

Gardenia, bright yellow buds opening to double flowers of cream color.

Pauls Scarlet, large vivid scarlet clusters of 3 to 30 flowers, most popular of all Climbing Roses.

Silver Moon, beautiful, fragrant, semi-double, creamy-white.

Rock Garden Plants

20c Each; 3 for 55c.

Collection of 10 plants, any assortment, \$1.75

Achillea, magenta red, blooms all summer. ---

Shasta Daisy, large white flowers, in bloom June to August.

Thyme, very dwarf, delicate fragrant foliage.

Phlox Subulata (Creeping Phlox) lavender flowers early summer.

Platycodon (Balloon Flower) blue, buds balloon shaped.

Ranunculus (Buttercup) bright golden yellow flowers, glossy foliage, creeping.

Sedum, creeping, rapid growth, yellow flowers.

Statice (great Sea Lavender) masses of tiny lavender flowers, fine for winter bouquets.

Violets (hardy sweet) large blue flowers in great profusion.

Santolina, dwarf, silver, sweet smelling foliage.

NURSERY STOCK

We offer an assortment of improved varieties, carefully selected for their special merits. You will find it a convenience to send your Tree and Shrub order with your Seed order, and you may be assured it will have our careful and prompt attention.

COMMERCIAL FRUIT GROWERS are invited to send us their list of wants for bids.

Planting instructions accompany every order.

Nursery stock is shipped by express or freight collect

Trees larger than 3 to 4 feet cannot be sent by mail. If trees up to 4 feet are wanted by mail, add 10c each for postage.

FRUIT TREES

2 YEARS OLD. These prices apply to all fruit trees.

	Each	Per 3	Per 10	Per 25
5-6 feet	.50	\$1.45	\$4.50	\$10.50
4-5 feet	.40	1.15	3.50	8.25
3-4 feet	.30	1.05	2.50	5.75

(See Special Offer on Cherries Below)

Apples

- DELICIOUS**, winter, large red dessert apple, very popular.
- GRIMES GOLDEN**, winter, medium, bright yellow, pink cheek, very hardy, best quality, fancy dessert, juicy, sweet, mild.
- JONATHAN**, fall and winter, medium, red, one of best for market and home use.
- MAMMOTH BLACK TWIG**, winter, large, dark red, mild firm flesh, keeps well.
- STAYMAN WINESAP**, winter and spring, large, red, firm, juicy, good quality.
- WINESAP**, winter, medium, dark red, leading late winter variety.
- YELLOW TRANSPARENT**, summer, large yellow, very valuable early apple, good quality.
- YORK IMPERIAL**, winter, medium, yellow shaded red, juicy sub acid, good shipper.

Peaches

- CHAMPION**, midseason, yellow, freestone, large, white flesh, high quality
- EARLY WHEELER**, early, white, cling, large, good flavor, best early peach.
- ELBERTA**, yellow, midseason, freestone, tree very hardy, leading market peach.
- HEATH CLING**, late, white, cling, very large, juicy and sweet.
- J. H. HALE**, very large, yellow, midseason, freestone, very productive, good flavor.
- ROCHESTER**, large, yellow, midseason, freestone, bears very young, hardy, fine quality.

Farm and Home Orchard Collection

- | | |
|-------------------------|------------------|
| 1 Delicious Apple | 1 Winesap |
| 1 Grimes Golden Apple | 1 Champion Peach |
| 1 Jonathan Apple | 1 Elberta Peach |
| 1 Yellow Transp't Apple | 1 Kieffer Pear |
| 1 Early Richmond Cherry | 1 Burbank Plum |
| 1 Montmorency Cherry | 1 Sapa Plum |
- 12 selected trees, 5-6 ft. high, well branched good roots for only \$4.95.

Grapes

2-Year Vines

	Each	Per 3	Per 10	Per 100
Concord , black, large main crop	.15	\$.40	\$1.20	\$10.00
Moores Early , black early	.20	.54	1.50	12.00
Niagara , white, large berries	.20	.54	1.50	12.00
Brighton , red, large midseason	.20	.54	1.50	12.00

Plums

- ABUNDANCE**, bright cherry red, medium size, flesh yellow, juicy, excellent quality.
- BURBANK**, large, reddish purple, flesh yellow, tree hardy, quality good.
- OPATA**, dark purplish red, green flesh, very early, heavy bearer.
- SAPA**, dark purple, red flesh, bears young, high quality, dessert plum.
- SHROPSHIRE DAMSON**, deep purple, delicious quality, one of the best for market.
- WANETA**, bright red, very large, heavy bearer, good shipper, splendid quality.

Pears

- KIEFFER**, should be planted with Garber as a pollinizer, large, attractive, good keeper and shipper, profitable market variety.
- GARBER**, large, bright yellow, red cheek, juicy and good, fine for canning.
- DOUGLAS**, almost blight proof, bears very young and heavily, large, good quality.
- SECKEL**, (Sugar Pear) small but of highest quality, extremely hardy, ripens late.

Cherries

- EARLY RICHMOND**, (sour) leading early cherry, very hardy, bright red, best for cooking.
- BLACK TARTARIAN**, (sweet) large, purplish black, rich and juicy, excellent flavor.

Special Cherry Offer

MONTMORENCY, (sour) best sour cherry on the market, outsells all others, large dark red fruit, fine flavor, good shipper and canner and always brings good prices. Two-year-old trees, 5-6 ft. high, 40c each; 3 for \$1.15; 10 for \$3.50; 25 for \$8.25

Blackberries

No. 1 Root Cutting Plants

	Per 10	Per 25	Per 100
Early Harvest , very early, prolific	.50	\$1.00	\$3.50
Eldorado , large, sweet melting	.55	1.10	4.00

Strawberries

Per 25 Per 100 Per 1000

Mastodon , everbearing (perfect)	.75	\$2.50	\$20.00
Senator Dunlap (perfect)	.40	1.00	7.75
Aroma (perfect)	.40	1.00	7.75
Blakemore (perfect)	.50	1.25	8.50

Description of Blakemore: Introduced several years ago by the U. S. Department of Agriculture. Has proven to be a very satisfactory main crop berry. Fine flavor, good texture, medium red color. About same size as Dunlap but more pointed. Keeps well, good for both market and canning.

Raspberries

No. 1 Plants

	Per 10	Per 25	Per 100	Per 500
Cumberland , black, large productive	.40	\$.90	\$3.00	\$14.00
Pearl , black, early, profitable	.40	.90	3.00	14.00
Latham , red, largest and best red variety	.40	.90	3.00	14.00

FARM AND FIELD SEEDS

In Sealed Bags, Purity and Germination Certificate Attached.

Years ago, when farmers and planters bought just "seeds," they did not pay much attention to grade and quality. Now, however, with the advent of Farm Organizations, Government Agricultural Farms and Testing Laboratories, the farmer and planter buys seeds for quality, purity and germination.

For thirty-eight years the farmers of the Ozarks have put their faith in "Star Brand Seeds" in sealed bags. Why? Because "Star Brand" and "Exchange Brand" Seeds are of the highest type, fully matured, perfectly re-cleaned, analyzed for purity and tested for germination. To enable you to secure your seeds at the lowest price, we have local representatives in every community who order their seeds in large quantities or carload lots. You can save money by ordering through our local representative.

For quality and service specify "STAR BRAND" OR "EXCHANGE BRAND".

Weights per bushel differ slightly in different states. These weights are approximately correct both per bushel and per acre.

A Step Ahead of the Times

We believe we were the first Seed Company to pack seeds in sealed bags, with purity and germination certificates attached. This we did before seed laws required it. Our intention is to keep "STAR BRAND" and "EXCHANGE BRAND" seeds the most satisfactory and the best seeds on the market.

Prices on Grass and Clover and all Farm Seeds are constantly changing. We invoice all orders sent us at the lowest market price prevailing at time order is received. Latest market prices quoted on request.

ALFALFA—Star Brand—Exchange Brand
60 Pounds a Bushel. Sow 20 Pounds per acre.

GRIMM ALFALFA—Star Brand — Exchange Brand
60 Pounds a Bushel. Sow 20 to 25 Pounds per acre.

MEDIUM RED CLOVER—Star Brand — Exchange Brand
60 Pounds a Bushel. Sow 8 to 12 Pounds per acre.

MAMMOTH, or SAPLING—Star Brand — Exchange Brand
60 Pounds a Bushel. Sow 8 to 12 Pounds per acre.

ALSIKE CLOVER—Star Brand — Exchange Brand
60 Pounds a Bushel. Sow 4 to 8 Pounds per acre.

WHITE CLOVER—Star Brand — Exchange Brand
60 Pounds a Bushel. Sow 4 to 8 Pounds per acre.

SWEET CLOVER—Star Brand — Exchange Brand
60 Pounds a bushel. Sow 12 to 15 Pounds per acre.

HUBAM CLOVER—Star Brand — Exchange Brand
60 Lbs. a Bu. Sow 20 to 25 Lbs. per Acre Broadcast.

CRIMSON CLOVER—Star Brand — Exchange Brand
50 Pounds a Bushel. Sow 15 Pounds per acre.

JAPAN CLOVER or LESPEDEZA
25 Pounds a bushel. Sow 15 to 25 Pounds per acre

KOREAN JAPAN CLOVER

TIMOTHY—Star Brand—Exchange Brand
45 Pounds a Bushel. Sow 12 to 15 Pounds per acre

TIMOTHY AND ALSIKE
45 Pounds a Bushel. Sow 15 to 20 Pounds per acre

TIMOTHY AND CLOVER
45 Pounds a Bushel. Sow 15 to 20 Pounds per acre

KENTUCKY BLUE GRASS—Star Brand—Exchange Brand
14 Pounds a Bushel. Sow 20 to 30 Pounds per acre

RED TOP—Star Brand—Exchange Brand
14 Pounds a Bushel. Sow 15 to 25 Pounds per acre

ORCHARD GRASS—Star Brand — Exchange Brand
14 Pounds a Bushel. Sow 14 Pounds per acre.

MEADOW FESCUE or ENGLISH BLUE GRASS
24 Pounds a Bushel. Sow 20 to 30 Pounds per acre

DOMESTIC RYE GRASS
20 Pounds a Bushel. Sow 40 to 50 Pounds per acre

HUNGARIAN BROME or AWNLESS BROME
14 Pounds a Bushel. Sow 20 Pounds per acre.

ROUGH STALKED MEADOW GRASS

PACEY'S RYE GRASS

Write for prices on Field Seeds, if Your Local Merchant Cannot Supply You With
STAR BRAND OR EXCHANGE BRAND SEEDS
Please Mention His Name.

Special Golf Mixture

We have a special pamphlet on the construction and maintenance of Golf Links which we will be pleased to send on request. We find that the best results are obtained by consultation with each customer, so if you will write us your problems, a description of your links, the nature of the soil, etc., we will give it individual attention.

Buckwheat

22 Lbs. a Bushel. Sow 25 Lbs. per acre.
Japanese Silver Hull

Barley—Star Brand

48 Lbs. a Bu. Sow 95 to 100 Lbs. per acre.
White Hulless Bearded

Broom Corn

48 Lbs. a Bushel. Sow 36 Lbs. per acre.
Imp. Evergreen Black Spanish
Dwarf Evergreen White Italian

Rape

56 Lbs. a bushel. Sow 8 Lbs. per acre.
Dwarf Essex.

Sunflower

Mammoth Russian—7 Lbs to acre.

Rye—Star Brand

56 Lbs. a bushel Sow 1 to 1½ Bu. per acre.
Spring Rye Winter Rye

Vetch

60 Lbs. a bushel—60 Lbs. per acre.
Sand or Hairy Spring Vetch

Flax—For Sowing

56 Lbs. a Bushel. Sow 35 Lbs. per acre.

Feterita

50 Lbs. a bushel. Sow 25 Lbs. to acre.

Teosinte

2 to 3 Lbs. plant an acre.

Mung Beans

8 Lbs. of seed to plant one acre.

**Egyptian Wheat
or Shallu**

Oats

Star Brand—32 Lbs. a bushel. Sow 1 to 2 bushels per acre.
Texas Rust Proof Kanota Oats
Lincoln White Winter Turf

Fodder Cane Seed

STAR BRAND

50 Lbs. a bushel. Sow 75 to 100 Lbs. per acre for fodder.

Early Orange Red Top
Standard Orange Texas Seeded Ribbon
Early Black Amber Japanese Honey
Grohoma

Millet—Star Brand

50 Lbs. a bushel. Sow 25 Lbs. per acre.
German Millet Jap. Millet or Billion
White Wonder lion Dollar Grass
Hog Millet or Pearl Millet or
Manitobia Pencillaria.

Milo Maize

50 Lbs. a bushel. Sow 40 Lbs. per acre.

White Kaffir Corn

50 Lbs. a bushel. Sow 25 Lbs. per acre.
Sunrise Kaffir.

Sudan Grass

Star Brand. 40 Lbs. a bushel. Sow Broadcast 20 to 25 Lbs. per acre.

Cowpeas

60 Lbs. a bushel. Plant broadcast 60 Lbs. to acre. Drill ¼ bushel per acre.

There is no cheaper way to improve poor land than by growing cowpeas. They add nitrogen and improve the mechanical condition of the soil.

Whippoorwill	Canada Field
Black Eye	Red Ripper
Black	Sugar Pea
Mixed	Blue Goose
New Era	Brown-eyed
The Clay	Noname
	Lady Pea

Velvet Beans

½ Bushel to the acre. Lb. 25c; postpaid.

Johnson Grass

25 Lbs. a bushel. Sow 20 Lbs. per acre.



ORANGE CANE

Wheat

60 Lbs. to bushel. 90 Lbs. per acre.
FULCASTER RECLEANED—Winter, soft.
MEDITERRANEAN RECLEANED—Winter, soft.

Grass Seeders



CAHOON—A splendid seed sower that will pay for itself in a few days in the time saved. Each.....\$5.00
CYCLONE. Each 2.00
THE HORN. Each 1.00
Postpaid, add 15c each.

McQueen's Pure Culture

We believe this the best of the many Bacteria Cultures. McQueen's Pure Culture is put up in round cans, Garden, one-half bushel, one bushel, two and one-half bushel, and five bushel sizes. Full directions for use with each can. We can offer cultures for all the different legumes, including Alfalfa, Clover, Cow Peas, Soy Beans, Vetches, Garden Peas, Beans, etc. In ordering state which seed you wish to inoculate.



Soy Beans

Sixty Lbs. a bushel. Plant 1 bushel per acre. They make poor land good—they make good land better. Soy bean hay contains a high per cent of protein, is superior to cow-peas in feeding value and as a milk and butter producer is equal to alfalfa and superior to cotton seed meal. The beans and bean meal contain about 35 per cent of digestible protein and stock eat them with relish and thrive on them.

VIRGINIA	MAMMOTH YELLOW
EALY YELLOW	LAREDO
WILSON EARLY BLACK	MANCHU

SPECIAL

FREE PREMIUM

See Inside Cover Page

EXTRA PACKETS FREE!

SEED CORN

Shelled Corn 56 Lbs. a Bushel.

Ear Corn Shuck off 65 lbs. Ear Corn Shuck On 70 Lbs.

There is positively no comparison between our Seed Corn and the average Corn. Our Seed Corn is Nubbed, Tipped, Butted, Graded and Tested for Germination.



BOONE COUNTY WHITE—(The Old Reliable White Corn)—In general appearance this corn is pure white. large ears and deep, medium rough kernels. It is particularly adapted for milling purposes, making a fine white meal.

ST. CHARLES WHITE—The famous Ensilage Corn of the South. We have improved this type and have perfect success with it in this climate. Matures in 110 to 115 days. Pure white corn, red cob, medium small; grain extra deep, ear, transparent white.

IOWA SILVER MINE—Ninety-Day Corn. It has not a large growth of fodder, having been bred essentially for grain, though it has plenty of blades to support the growth, and is as well-rooted as any corn grown.

JOHNSON COUNTY WHITE DENT—Tips fill well over the end and a large per cent of the ears are entirely covered with grains; the butts are well-rounded out, with a medium-sized shank; kernels very uniform, wedge-shaped; pure white cob.

HICKORY KING—This is an entirely distinct variety among the white corn, combining the largest grain with the smallest cob. It is a great yielder, giving more shelled corn to the acre bulk of ears than any other variety. The grain makes most excellent hominy.

CHAPMAN'S PIONEER — White Hybrid, 110 days. Long, smooth, large ears. Medium grain and one of the best feeding corns grown. It is not milling corn.

IMPROVED LEAMING—Ninety-day Corn. Improved Leaming is medium early. The ears are large with very deep bright yellow kernels. The cob is small. The stalks grow to a medium height and often produce two large ears and make first-class fodder.

REID'S YELLOW DENT—Thoroughbred, pedigreed, carefully selected stock. It is of handsome shape and color and largely grown for exhibiting at fairs, and is used by many corn schools as a standard for judging, and is too well known to require lengthy description. Matures in about 115 days.

IOWA GOLD MINE—It is early ripening. The ears are of good size and shape and of a bright golden yellow color.

GATE POST—This is now one of the most prominent late varieties of Yellow Dent Corn in the country. It matures in about 115 days.

IMPROVED GOLDEN BEAUTY—The ears are of perfect shape, with straight rows of bright yellow grain, remarkable in size and filled out completely to the extreme end of the cob. Matures in 100 days.

STRAWBERRY CORN—Extra large ear, grain red and white striped.

BLOODY BUTCHER—Very late. Grain red and yellow. **SWEET CORN FOR FODDER**—It has the great merit of being so sweet and palatable that cattle eat every part of the stalks and leaves and consequently none is wasted.

BRAZILIAN FLOUR CORN—Withstands drought. By planting every month it will furnish green corn all the season.

EUREKA SILAGE CORN—One of the standard silo corns; good big stalks and ear.

IMPROVED INDIAN SQUAW CORN—The grains are a variety of colors, red, yellow, blue and white, which makes this corn a good looker on the cob or in the bin. Lb., 25c. Postpaid.

Hybrid Corn

In fair and impartial tests, crossed or Hybrid Corn has considerably outyielded standard sorts. Crossed Corn is hardy and vigorous, less susceptible to disease and early maturity insures hard, well ripened corn. We recommend a fair test of this strain.

SEMESAN

Semesan is the only organic mercury disinfectant that can be used in either liquid or dust form for the treatment of a variety of fungus and bacterial diseases.

SEMESAN—For flowers and vegetable seeds.

SEMESAN BEL—For seed potatoes. Pound treats 16 to 22 bushels of seed.

SEMESAN JR.—For seed, field and sweet corn. Only two ounces necessary per bushel of seed field or sweet corns. Costs only 2½ cents an acre.

CERESAN—For seed grains. Only two ounces needed per bushel of seed wheat, rye, sorghums or millet and three ounces for oats and barley.

SEMESAN
Makes Seeds Healthy

Makes Seeds Healthy

SEMESAN		SEMESAN JR.	
2 oz. tin	\$.50	4 oz. tin	\$.50
1 lb. tin	2.75	1 lb. tin	1.75
5 lb. tin	13.00	5 lb. tin	8.00
SEMESAN BEL		CERESAN	
4 oz. tin	\$.50	1 lb. tin	\$.75
1 lb. tin	1.75	5 lb. tin	3.00
5 lb. tin	8.00	25 lb. pail	12.50

Du Bay Seed Disinfectants are poisonous and under present postal regulations must be sent by express or freight.

**Write For Prices On
 SEED CORN**

Korean Lespedeza

For Summer Pasture

For Quality Hay

For Building Soil

As a Drouth Resistant Legume

Korean Lespedeza has won the distinction of being the best Summer Legume pasture for poor soil or for strong soil which so far has been introduced in this country.

Korean Lespedeza will stand heavy grazing from early Summer until killed by frost. We have no report so far that it bleats stock, is ideal in permanent pasture mixtures with Blue Grass, Orchard Grass or Red Top, Alsike and White Clover because Lespedeza furnishes abundant grazing during July, August, and September when other pastures and Clovers are dormant. The Lespedeza matures before smothering out the growth of the fall grasses.

This improved variety of Korean Lespedeza furnishes a guarantee hay crop. Drouths which kill out other Clovers and Grasses are resisted by Lespedeza; 90% of the Lespedeza sowed in 1933 made a stand while most other Clovers and Grasses failed completely on account of the drouth. Korean makes a soft leafy hay equal to Alfalfa or better in quality with no loss in feeding. It is especially valuable for young live stock, dairy cattle, or sheep. It yields well.

We advise seeding 15 to 20 lbs. per acre for a full crop the first year. Sow broadcast from March to May 15th. Sow either with or without a nurse crop. Do not cover with any tools. The advantage of a nurse crop is to choke down the weeds while the Lespedeza is young. The Lespedeza reseeds itself every year.

Many lots of seed direct from the thresher clean out 30 to 40 per cent therefore recleaned seed gives you much better results as seed direct from the huller contains a large quantity of chaff and weed seed and is always expensive.

Winter Barley

For Winter Pasture

This is one of our very best Winter grain crops, has proven to be perfectly hardy in the Ozarks. The plant may be grown for pasture or grain, should be sown at the same time we sow Winter Wheat, or for pasture it may be sown earlier.

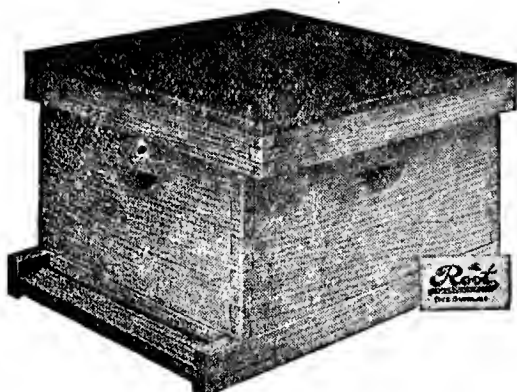
Sow to the acre 1 bushel of Barley and 10 lbs. each of Crimson Clover and Winter Vetch. This combination makes a hay of excellent quality which is ready for harvest early in the Spring. As stated the plant makes a fine pasture and a heavy yield of grain which has a very high feeding value. A few acres at least of this fine Winter cover grain crop should be sown on every farm.

This fine crop of hay—Barley—Clover and Vetch can be harvested in ample time for planting and growing another crop on the same land.

It has been known that this Winter Barley yields as high as 65 bushel to acre in this country. You will find this Winter Barley not only more productive than the beardless barley but makes a better pasture.

As a green manure crop there is probably no better mixture both on account of the humus and its great ability to choke out weeds.

BEE SUPPLIES



Ten-Frame Metal Covered Hive.

If you live in the suburbs, or on a farm, keep a few stands of bees; they will amply repay you for the little attention they require, and will often return you a splendid profit.

We handle a full line of the I. A. Root Co. Bee Supplies. The standard of the world. Write for our Bee Supply Catalog.



Standard Smoker

YOU WILL BE INTERESTED IN THIS NEW CATALOG BECAUSE YOU NATURALLY ARE INTERESTED IN MAKING YOUR BEEKEEPING PROFITABLE. IT OFFERS A COMPLETE LINE OF HIGH QUALITY SUPPLIES FOR PROFITABLE BEEKEEPING.

FERTILIZERS

VIGORO

Specially prepared plant food

See Back Cover

ACID PHOSPHATE (16% available)—Bone phosphate the most available form. Used on grain crops and others requiring an excessive amount of phosphoric acid. 1 lb., 15c; 12 lbs., \$1.00. Not prepaid.

SULPHATE OF AMMONIA—Used for its nitrogen. A very desirable fertilizer for all plants in which a large leaf development or rapid growth is desired. Use 1 lb. to 50 square feet of ground or bench, or a tablespoonful to a bushel of soil, or 3 gallons of water. 1 lb., 15c.; 10 lbs., \$1.00. Not prepaid.

HYDRATED LIME—Hydrated lime used for top dressing on lawns and mixing soil for potting plants. 50 lbs. to cover 1000 square feet. 10-lb. bag, 30c; 50-lb bag, 70c. Not prepaid.

NITRATE OF SODA—Carries nothing but nitrogen (ammonia)—no phosphoric acid or potash. It is highly stimulating. On grass or other vegetation it is visible in a few days after application. 1 lb., 15c; 10 lbs., \$1.00; 50 lbs., \$3.00; 100 lbs., \$5.00. Not prepaid.

PLANT PEP—For House Plants. 60c pkg. Postpaid. By mail, add 1c per lb. plus 6c for postage. By express or freight at purchaser's expense.

CYANOGENS—A DUST TO KILL ANTS, RATS, MICE, MOLES:

½ pound tin45c 5 pound tin\$ 3.00
1 pound tin75c 25 pound tin 10.00

(CANNOT BE SENT BY MAIL)

Cyanogas Foot Pump Duster, each.....\$5.00
Cyanogas Hand Duster, each..... 1.40

(Postpaid)

THANK YOU
Never before have American Farmers and Gardeners responded so well to the use of an Inoculator as shown by the tremendous sales increase of McQueen's. To show our appreciation and to permit still more farmers and gardeners to use McQueen's; prices are greatly reduced.

LEADERSHIP
Leadership, increased sales and lower production costs enables McQueen's to greatly reduce prices without sacrificing quality. McQueen's Inoculator is now sold at the lowest price in its history. The Guarantee protects you as it has for nearly a quarter century.

Every Farm and Garden Needs

NEW ECONOMY PRICES

For SWEET CLOVER, ALFALFA, CLOVERS, LESPEDEZA (State Kind)			For SOY BEANS, COW PEAS, VETCH, FIELD, AUSTRIAN PEAS (State Kind)		
Size	Inoculates	Price	Size	Inoculates	Price
½ Bu.	30 lbs.	\$.35	1 Bu.	60 lbs.	\$.35
1 "	60 "	.50	2 "	120 "	.50
2½ "	150 "	1.00	5 "	300 "	1.00
5 "	300 "	1.75	10 "	600 "	1.75

GARDEN PACKET
Mixed culture for 5 lbs. PEAS, BEANS and SWEET PEAS **15c**

Inoculation, Like Lime, Must Be Supplied For Best Legume Yields

INOCULATE
Alfalfa, Clovers, Soybeans, Lespedeza, Peas, Beans—legumes of all kinds—grow better, yield higher, and build up soil quickly, if inoculated with McQueen's Inoculator. You can do this for a few cents per acre. McQueen's is a high grade product used by farmers throughout the world for nearly a quarter century. It is the "Farmers Favorite". Inoculate all legume seed. We recommend McQueen's.

IMPORTANT:
Always state seed to be inoculated.

SPRAY MATERIALS AND DISINFECTANTS

We carry a general line of spray materials and agricultural chemicals.

LIME SULPHUR (Solution) — The best remedy for San Jose scale. One gallon makes 12. Also one of the best summer sprays as it is an excellent fungicide. When used in summer dilute with 20 to 30 parts water. Write for prices in barrel lots; also car lots.

DRY LIME SULPHUR—For dormant spray use 12 to 15 lbs. to each 50 gals. of water. For summer spray, 3 to 4 lbs. to each 50 gals. of water. **Lb., 35c; 5 lbs., \$1.50.**

BORDEAUX MIXTURE (Dry)—The best fungicide for curing and preventing black rot, mildew, blight, leaf curl, scab or other fungoid diseases on fruits and plants. 1 lb. will make 5 gals. liquid. **Lb., 35c; 4 lbs., 80c.**

ARSENATE OF LEAD (Dry)—For dusting and spraying. Solves the problem of controlling practically all leaf-eating insects in an efficient manner. **1 lb., 35c; 4 lbs., 60c.**

CYANOGAS—Fumigant. ½ lb. size, **45c ea.; 1 lb., 75c; 5 lbs., \$3.00.**

CANNOT BE SENT BY MAIL

Prices Subject to Change Without Notice.

HOFSTRA—pkg., 15c; 2-oz. pkg., 35c; 5-oz. pkg., 60c.

CARBON DISULPHIDE — For ants and cut worms. **1 lb., 50c.**

FISH-OIL SOAP—Standard wash for trees and plants where insects and eggs affect the bark. **Lb., 30c; 5 lbs., \$1.25.**

FLOWERS OF SULPHUR—**Lb., 10c; 10 lbs., 75c; 50 lbs., \$2.00; 100 lbs., 3.00.**

NICO-FUME LIQUID—For fumigating or spraying; contains 40% nicotine. ¼ lb., 60c; 1 lb., \$2.00; 4 lbs., \$6.25; 8 lbs., \$11.50.

SURE NOXEM—1-lb. carton, 25c.

TOBACCO DUST (Regular Grade)—5 lbs., 40c; 10 lbs., 65c; 100 lbs., \$4.00.

TREE TANGLEFOOT—Perfect safeguard for trees. **Lb., 60c; 5 lbs., 2.75.**

Write for our complete Insecticide list.

PARIS GREEN—A poisonous insecticide in powder form, for insects which chew. When applied as a powder, use 1 part Paris Green to 100 parts plaster or flour. As a liquid, 1 lb. of Paris Green in 150 to 300 gals. water; if used on fruit trees, add 1 lb. quick-lime. ¼ lb., 15c; ½ lb., 25c; 1 lb., 50c.

SLUG SHOT (Hammond's)—Guaranteed to destroy potato bugs and those on tomato and egg plants, currant worms, cabbage lice and worms. **1 lb., 25c; 5 lbs., 75c.**

BLACK LEAF 40—Is a solution of nicotine sulphate. It is highly recommended by experiment stations throughout the United States as a spray for soft-bodied sucking insects. For spraying plants and for delousing poultry it has no equal. Full directions in every package. **1-oz. bottle, 35c; 5-oz. bottle, \$1.00** (makes 40 to 100 gals.); **1-lb. bottle, \$2.10; 2-lb. can, \$3.10** (makes 200 to 500 gals.); **5-lb. can, \$5.85; 10-lb. can, \$10.15;** (makes 840 to 2100 gals.).

SPRAY CALENDAR—WHEN TO SPRAY, WHAT TO USE

Insect or Disease.	Plant Attacked.	What to Spray With	First Spraying
Coddling Moth...	Apple, Pear.....	Asenate of Lead.....	Just before calyx cups close.
San Jose Scale...	Apple, Pear.....	Lime Sulphur.....	While trees are dormant.
Aphids	Roses and Plants...	Black Leaf 40.....	As soon as insects appear.
Cabbage Worms...	Cabbage	Arsenate of Lead or Sure Noxem....	When insects appear.
Scab	Apple and Pear.....	Lime Sulphur.....	Just before blossoms open.
Potato Bugs.....	Potatoes	Sure Noxem and Arsenate of Lead...	When bugs appear.
Leaf Curl.....	Peach	Lime Sulphur Solution.....	While trees are dormant.
Mildew	Gooseberry	Potassium Sulphide.....	Just as buds burst.
Worms	Gooseberry	Sure Noxem	When worms appear.
Blotch	Apple	Bordeaux Mixture.....	Two weeks after petals fall
Black Rot.....	Grapes	Bordeaux Mixture.....	When buds are ¼ inch long.
Brown Rot.....	Peach and Plum....	Dritonic Sulphur.....	Just before buds open.
Mildew	Roses and Flowering Shrubs..	Potassium Sulphide.....	As soon as infection appears.
Melon and Cucumber Beetle.	Melons and Cucumbers	Tobacco Dust.....	As soon as plants come up.
Moles, Rats, Chinch Bugs...		Cyanogas	
Insects	Shrubs and Plants...	Slug Shot.....	When insects appear.



ACME ALL ROUND SPRAY

The latest improvement in the insecticide field; one product which will combat blight and fungous diseases, control sucking insects and destroy chewing insects in one application. Safe to use on almost all fruits, vegetables, flowers and shrubs. Write for descriptive circular.

Prices: ¼ lb., 35c; 1 lb., 85c.

ACME GARDEN GUARD

A garden insecticide and fungicide for use as a dust. No water, no mixing, no muss.

For use on:

Cabbage, cauliflower, melon vines, tomato plants, currants and gooseberries and other vegetable, flowers and shrubs of many kinds.

Price: 1-lb. sifter carton, 25c.

SHEPS PLANT' SPRAY



Try it. You will find it to be everything we claim for it. You run no risk in purchasing it, because it is absolutely non-poisonous to human beings, birds, animal or plants, but sure death to most insects. Use according to directions and you will see results in twenty-four hours or we will cheerfully refund your money.

PRICE:—Postpaid—

1-oz. bottle.....25c each
2-oz. bottle.....40c each
8-oz. bottle.....75c each
16-oz. bottle.....\$1.25 each

WE ARE IN POSITION TO MAKE VERY ATTRACTIVE PRICES ON SPRAY MATERIAL TO ORCHARDISTS ON CAR LOTS OR SMALLER QUANTITIES. WRITE FOR PRICES.

SPRAYERS AND DUSTERS



AUTO SPRAY

The Standard for 20 years. 500,000 in Use.

The Favorite With the Florists

Diameter 7 inches

Height 2 feet

Capacity 3½ Gallons

Galvanized Tank with Auto top

Price \$1.50
Add 25c

Postage

SPRAYING

TO BE

EFFECTIVE

MUST BE

WELL

DONE

It's Double Acting



The Same Spray With Half The Labor

Auto Spray No. 5

A high pressure yet light and durable sprayer made entirely of brass. It is DOUBLE ACTING, producing a continuous spray, and will generate a pressure of 180 pounds per square inch. It operates with half the effort and must not be confused with sprayers of similar design which are single acting.

Price \$4.50 Each. Add 15c Postage.

Auto Spray No. 26



A continuous Sprayer, having many superior mechanical features. The bowl can be detached by simply unscrewing it from the pump. This makes it very easy to clean the tank and syphon tube.

The entire Sprayer is very well made, and will last a long time.

Price 26-B—Tin Pump and Brass Tank.....\$1.50

26-C—Brass Pump and Brass Tank..... 2.00

(Postage, 15c extra)

New Misty



The popular tin atomizer designed for insecticides, disinfectants. Especially useful for the small garden and the flower garden, or for house plants.

1 Pint size.....25c
1 Quart size.....40c

(Postage, 15c extra)

SPRAY OFTEN
Spraying is not expensive and will pay for itself several times over.

BASKETS

Just what you want to ship out your beans, peas, tomatoes and other garden truck.

Solid Handle Market

¼-bu. size, packed 4 in bbl.
½-bu. size, packed 4 in bbl.
Each10c
1 doz.90c
5 doz., per doz.85c
10 to 25 doz., per doz.80c
25 to 50 doz., per doz.75c

F. O. B. Springfield.



Consult Our

- GENERAL SEED CATALOG
- BULB AND PLANT CATALOG
- BEEKEEPER'S CATALOG
- DOG FEED PAMPHLETS
- INOCULATION PAMPHLETS
- SEMESAN PAMPHLETS
- CHILI SUPPLY LISTS
- SPRAYING GUIDE

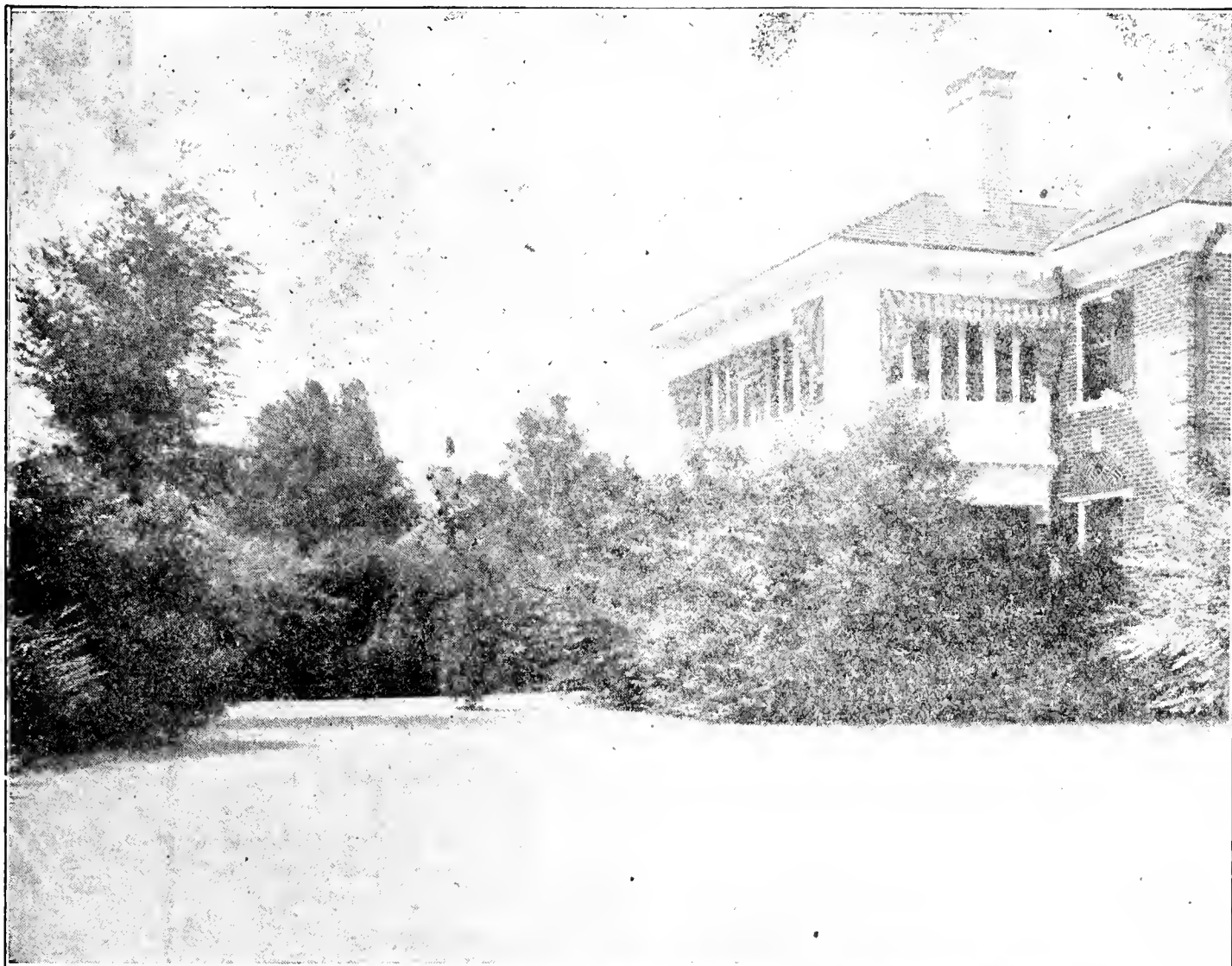
SPRINGFIELD SEED COMPANY

SPRINGFIELD, MISSOURI

WE HAVE A COMPLETE ASSORTMENT OF FLOWER SEEDS AND FIELD SEEDS. SEE PAGE 31.

Make Your Home Grounds Beautiful

No residence, no matter how expensive, is really attractive unless the grounds and surroundings are equally beautiful. On the other hand the humblest dwelling can be made wonderfully homelike and attractive in the proper setting. The first essential is a neat, smooth, green turf. This can only be secured by the use of proper grass seed. Then the careful selection and proper placing of a few Hardy Perennials, Shrubs and Annual flower beds will complete the picture. You will find Hardy Perennials and Shrubs listed in this Catalog, pages 19 to 20.



OUR SUPERIOR MIXED LAWN GRASS TO MAKE A LAWN

Remember when making a lawn that it is to last for years, and be an ornament to the home, so give plenty of time and care to preparation before the seeds are sown. Several weeks before sowing dig the soil deeply, break up the lumps, apply a lawn fertilizer such as **VIGORO** and rake the top soil; at intervals of ten days or two weeks rake the surface to destroy the weeds, and before sowing have the surface as fine as a rake will make it. Sow half the seeds, then sow the other half at right angles to the first sowing—This gives an even distribution. After sowing rake lightly so as not to cover the seeds too deep—covering with a roller is better—small seeds cannot germinate if planted too deep, an eighth of an inch is about right. Do not put stable manure on your lawn, as it adds to the many weeds already in the soil, and if not well broken up the lumps of manure will smother young grass.

Start the lawn as early as possible to give the grass a chance to become well established before the spring growth of weeds.

LAWN GRASS MIXTURE REQUIRED:

- For 150 sq. ft. (10x15 ft.)..... ½ Lb.
- For 300 sq. ft. (10x30 ft.)..... 1 Lb.
- For 5000 sq. ft. (50x100 ft.)..... 16 or 17 Lbs.
- For 43560 sq. ft. (1 acre)..... 145 Lbs.

Use about one-half as much for renovating old lawns.

SUPERIOR MIXED LAWN GRASS—Lb., 30c; 5 lbs., \$1.35. Postpaid.

KENTUCKY BLUE GRASS—Per lb., 30c; 5 lbs., \$1.35. Postpaid.

WHITE DUTCH CLOVER—Per lb., 60c; 5 lbs., \$2.75. Postpaid.

BERMUDA GRASS—Per lb., 40c; 5 lbs., \$1.75. Postpaid.

CREEPING BENT GRASS—Lb., \$1.25. Postpaid.

VIGORO

Specially prepared plant food

	PRICE	Not Prepaid
5-lb pkg.....	\$.50	25-lb. bag 1.50
10-lb. pkg.....	.85	50-lb. bag..... 2.50
	100-lb. bag.....	\$4.00
	12-oz. carton, 20c each.	Postpaid

VIGORO supplies just what is needed to produce a beautiful lawn, flowers, shrubbery and trees. It is a highly concentrated plant food, and must be applied according to instructions. Excessive applications, or too much applied in one spot, is not only wasteful but will "burn" the plants.

Dimensions of Ground	Rate of Application per 100 Square Feet	Amt. Necessary for One Application
20x 50 ft.	2 lbs. (equal 1 qt.)	25 lbs.
20x 50 ft.	4 lbs. (equal 2 qts.)	50 lbs.
50x100 ft.	2 lbs. (equal 1 qt.)	100 lbs.
50x100 ft.	4 lbs. (equal 2 qts.)	200 lbs.

Full directions for applying Vigoro are contained in the Home Beautiful booklet, a copy of which is enclosed in every bag of Vigoro. This booklet also gives valuable information on making a lawn, growing shrubbery, flowers, vegetables and trees.

GARDEN POTTERY

Combination

Fountain and Bird Bath

37 in. High, 20 in. Bird Bath

Decorated Green or Brown, each.....\$26.67
Fountain only 8.00
 Complete. Ready to Play. State Color.
 Not Prepaid.

26-in. High with Ornamental, 18-in. Bath. Fine design.
 Hard Burned Pottery (Not Cement). Light Stone
 Color — Stone Finish
 Special Price\$5.00
 Not Prepaid.

Vases, Fountains, Gazing Globes

FLOWER POTS

Measure Across Top.
 Pots Only.

Size	Each	Doz.
2½ in.	\$0.03	\$0.25
3 in.04	.35
4 in.05	.50
5 in.10	.75
6 in.15	1.25
7 in.20	2.00
8 in.30	2.75
9 in.40	4.00
10 in.60	6.00
12 in.	1.00	10.00

Saucers ½ price of pots



Shipment by freight or express at purchaser's expense.
 If pots are to be shipped freight or express add 10%
 extra for packing charge.

**See Special Offer
Page 1.**

IMPROVED CHAMPION ADJUSTABLE

LEG BANDS

Made of aluminum. Doz. 15c; 25 for 25c; 50 for 40c;
 100 for 75c. Postpaid.

If numbers are desired in rotation, 25 or more bands
 must be ordered.

SPIROL LEG BANDS—Celluloid. Will not fade. Colors:
 Black, white, dark blue, pink, light blue, red, green,
 yellow, purple. Prices: Doz. 15c; 25 for 25c; 50 for 40c;
 100 for 75c. Postpaid.

WIRE HANGING BASKETS

For Ferns

	Each
8-inch diameter	20c
10-inch diameter	30c
12-inch diameter	40c
14-inch diameter	50c

Add 10c each for postage.

Moss for the above baskets 25c. lb. Postpaid.

It takes 1 to 1½ lbs. per basket.

TREE LABELS—Painted.

Per 1000
 3½ x 5½ inches, copper wired\$2.35

POT OR GARDEN LABELS

Wooden—	Painted	
	100	1,000
4-inch	\$0.40	\$1.95
5-inch45	2.20
6-inch50	2.50
8-inch75	6.50
10-inch	1.00	7.50

Postpaid

BIRD SEEDS, Etc.

	Lb.
Mixed Bird Seed	\$0.20
Hemp Seed20
Canary20
Bird Millet (re-cleaned)15
Sunflower Seed for Parrots15
Cuttle Fish Bone, 2 for 5c.40
Bird Lettuce, oz., 15c.	1.50
Bird Pepper Grass, oz., 10c	1.00

	Pkg.
Bird Charcoal	\$0.10
Bird Biscuit (Sing Song)20
Spratt's Song Restorer30
Bird Gravel25

Postpaid.

PERFECTION DOG FOOD

Is a well-balanced ration, consisting of
 Corn Flakes, Cream of Wheat, Grape-
 nuts and other cereal foods—combined
 with Clean Dried MEATS, not scraps
 or waste.

The cooked, Prepared, and Balanced
 Meat-Cereal Food for Your HUNTING
 Dog—For Dogs of All Breeds—Pup-
 pies of All Ages.

It's not only a Food—It's also a
 "Tonic" and will prevent Skin Dis-
 ease. It gives your Dog the "HUNT-
 ING SPIRIT"—FULL OF PEP".



HOW TO FEED PERFECTION DOG FOOD

The amount of food for
 one meal depends on the
 size of the dog. For Bird
 Dog, Pointer or Setter, feed
 5 to 6 ounces at a meal.
 Larger or smaller dogs in
 proportion. Moisten the
 food with milk or beef
 broth—if not available,
 water can be used. And
 then "Watch Him Hunt!"
 5-lb. bag\$.50
 10-lb. bag 1.00

All shipping charges pre-
 paid.

100-lb. bag	\$5.00 F.O.B. Our Store
50-lb. bag	\$2.50 F.O.B. Our Store
25-lb. bag	\$1.50 F.O.B. Our Store

PARAMOUNT DOG FOOD—In 1-lb. cans—A 64% Beef
 Meat Food. Per can, 10c; Per Doz. Cans, \$1.00; Case of
 4 Doz. cans, \$3.15, F.O.B. Our Store.

SPECIAL OFFER—For \$1.00—Mail us a \$1.00 bill and
 we will ship prepaid a 10-lb. sack of Perfection and a
 1-lb. can of Paramount Dog Food for a try out for \$1.00.

PERFECTION COLIVEROL—Cod Liver Oil in powd-
 ered form. Easy to mix with food. 1-lb. can, 75c, postpaid.

OUR COMPLETE LINE OF STANDARD GARDEN SEED

Can be Ordered in Packets or Bulk

WRITE FOR PRICES IN LARGE QUANTITIES

Postpaid		Postpaid		Postpaid	
Pkt.	Lb.	Pkt.	Lb.	Pkt.	Oz.
BUSH BEANS—Green Pod					
Full Measure	.10 .25	Kendals Early Giant	.10 .25	Snow's Perfection	.05 .10
Bountiful	.10 .25	Early Evergreen	.10 .25	EGG PLANT.	
Red Kidney	.10 .25	POP CORN.			
Giant (Stringless)	.10 .25	White Rice, No. 1 bulk	.10	New York Improved	.10 .50
Burpee's Stringless	.10 .25	Japanese Hullless	.10	Black Beauty	.10 .50
Knife Blade	.10 .25	Dynamite, S. American	.10	ENDIVE.	
Early Yellow Six Weeks	.10 .25	ASPARAGUS.			
Refugee	.10 .25	Mary Washington	.10 .15	Green Curled Mammoth	.05 .15
Refugee Stringless	.10 .25	Palmetto	.05 .10	Ever-White Mammoth	.05 .15
Imp. Red Valentine	.10 .25	BEETS.			
Tennessee Green Pod	.10 .25	Banquet Table	.05 .10	KALE.	
Dwarf Horticulture	.10 .25	Egyptian Early Blood Turnip	.05 .10	Dwarf Green Curled Siberian	.05 .15
Henderson's Bush Lima	.10 .30	Eclipse	.05 .10	Dwarf Curled Scotch	.05 .15
Burpee's Bush Lima	.10 .30	Edmund's Blood Turnip	.05 .10	KOHL RABI.	
Fordhook Bush Lima	.15 .40	Detroit Dark Red Turnip	.05 .10	White Vienna	.05 .25
WAX BEANS—Bunch.					
Dwarf Golden Wax	.10 .25	Improved Early Blood Turnip	.05 .10	Early Purple Vienna	.05 .25
German Black Wax	.10 .25	Long Smooth Blood Red	.05 .10	Early White Erfurt	.05 .25
Pencil Pod Wax	.10 .25	Swiss Chard Lucullus	.05 .10	LEEK.	
Challenge Black Wax	.10 .25	Early Wonder	.05 .10	London Flag	.05 .20
Currie's Rust Proof Wax	.10 .25	Fire Ball	.05 .10	LETTUCE.	
Davis Kidney Wax	.10 .25	MANGEL WURZEL.			
Round Pod Kidney Wax	.10 .25	Mammoth Long Red	.05 .10	Grand Rapids Forcing	.05 .10
Wardwell's Kidney Wax	.10 .25	Norbiton's Giant	.05 .10	Denver Market	.05 .10
Kentucky Wonder Wax	.10 .25	Golden Tankard	.05 .10	Black Seeded Simpson	.05 .10
BEANS—Pole or Running.					
White Cornfield	.10 .25	Champion Yellow Globe	.05 .10	Early Curled Simpson	.05 .10
White Creaseback	.10 .25	Red Globe	.05 .10	Hanson Improved, head	.05 .10
Striped Creaseback	.10 .25	Improved White Sugar	.05 .10	Prize Head	.05 .10
Kentucky Wonder	.10 .25	BRUSSELS SPROUTS.			
Kentucky Cut Short	.10 .25	Hercules	.10 .25	Big Boston, head	.05 .10
Horticultural Pole	.10 .25	BROCCOLI.			
Lazy Wife	.10 .25	Mammoth White	.10 .45	White Summer Cabbage,	
Dutch Case Knife	.10 .25	CABBAGE			
Large White Lima	.10 .30	Yellow Resistant	.10 .40	head	.05 .10
King of the Garden	.10 .30	Golden Acre	.10 .40	Philadelphia Butter	.05 .10
Sieva Lima	.10 .30	Chinese Cabbage, Pe-Tsai	.10 .30	All Seasons	.05 .10
Speckled Lima	.10 .30	Copenhagen	.10 .20	Early Curled Silesia	.05 .10
Missouri Wonder	.10 .25	Extra Early Jers, Wakefield	.10 .20	New York Wonderful	.10 .15
White Kentucky Wonder	.10 .25	Charleston, or Large Wake-		Iceberg	.05 .10
Navy	.10 .25	field	.10 .20	Paris White Cos	.05 .10
PEAS—Wrinkled Sorts Marked *					
Alaska, 2 foot	.10 .25	Early Drumhead, Flat	.10 .20	May King	.05 .10
Dwarf Tom Thumb, 12-inch	.10 .25	Early Winningstadt, pointed	.10 .20	Wayahead	.05 .10
First and Best, 2-foot	.10 .25	Henderson's Early Summer	.10 .20	California Cream Butter	.05 .10
Philadelphia Extra Early	.10 .25	flat	.10 .20	MUSKMELON.	
*Bliss American Wonder	.10 .25	All Seasons	.10 .20	Acme, or Baltimore	.05 .10
*Little Gem, 18-inch	.10 .25	Sure Head, flat	.10 .20	Chicago Market	.05 .10
*Delicatessen Dinner, 2-foot	.10 .25	Henderson's Succession, flat.	.10 .20	Extra Early Nutmeg	.05 .10
*Nott's Excelsior, 15-inch	.10 .25	Early Dwarf Flat Dutch	.10 .20	Jenny Lind	.05 .10
*Horsford's Market Garden	.10 .25	CABBAGE—Late Sorts.			
*Strategem, 3-foot	.10 .25	Premium Late Flat Dutch	.10 .20	Golden Netted Gem	.05 .10
*Telephone, 4-foot	.10 .25	flat	.10 .20	Hackensack, early	.05 .10
*Champion of England, 5-ft.	.10 .25	Drumhead Savoy, flat head	.10 .20	Extra Early Hackensack	.05 .10
*Bliss Everbearing, 2-foot	.10 .25	Danish Ball Head	.10 .30	Large Green Nutmeg	.05 .10
Large White Marrowfat, 5-ft.	.10 .25	Red Rock	.10 .35	Long Yellow Cantaloupe	.05 .10
Black Eyed Marrowfat, 5-ft.	.10 .25	Red Dutch	.10 .35	Champion Market	.05 .10
*Gradus, 3-foot	.10 .25	CAULIFLOWER.			
*Thomas Laxton, 3 foot	.10 .25	Extra Small Leaved Erfurt.	.25	Rocky Ford	.05 .10
*Laxton's Progress, 18-inch	.10 .25	Early Snowball, true	.15	Banana	.05 .10
*Little Marvel, 18-inch	.10 .25	CARROTS			
*Potlatch, 3-foot	.10 .25	Chantenay	.05 .10	Honey Dew	.10 .15
*Yorkshire Hero, 2½-foot	.10 .25	Extra Early French Forcing	.05 .10	Salmon Tinted Pollock	.05 .10
*Laxtonian, 20-inch	.10 .30	Ox Heart	.05 .10	Hearts of Gold	.10 .15
Dwarf Grey Sugar (Edible	.10 .30	Danvers	.05 .10	Montreal Market	.05 .10
Pod)		Long-Orange Improved	.05 .10	Osage	.05 .10
Tall Melting Sugar (Edible	.10 .30	New Coreless	.05 .10	Tip Top	.05 .10
Pod)		CELERY.			
SWEET CORN—Northern Grown.					
Early Minnesota, early dwarf	.10 .25	Giant Pascal	.05 .25	Hales Best	.05 .10
Sweet or Sugar, early	.10 .25	Golden Self Bleaching, true	.10 .40	Honey Ball	.10 .20
Crosby's Early	.10 .25	White Plume	.05 .25	WATERMELON	
Early Mammoth, 2nd early	.10 .25	Dwarf Golden Plume	.10 .40	Sweetheart	.05 .10
Adams Early	.10 .25	Celery for Flavoring	.10	Long Dixie	.05 .10
Adams Ex. Early, earliest	.10 .25	CELERIAC.			
Golden Bantam	.10 .25	Turnip Rooted	.10 .25	Wonderful Sugar	.05 .10
Country Gentleman, Shoe Peg	.10 .25	COLLARDS.			
Late Mammoth, large	.10 .25	Georgia	.05 .15	Cuban Queen	.05 .10
Egyptian, large	.10 .25	CORN SALAD.			
Stowell's Evergreen, surest	.10 .25	Large Leaved	.05 .15	Georgia Rattlesnake	.05 .10
Black Mexican	.10 .25	CUCUMBER.			
Golden Sunshine	.10 .30	Evergreen White Splne	.05 .10	Kolb's Gem	.05 .10
Howling Mob	.10 .25	Improved Long Green	.05 .10	Mountain Sweet	.05 .10
Golden Giant	.10 .25	Westerfield's Chicago Pickle	.05 .10	Peerless, or Ice Cream	.05 .10
Shaker Early	.10 .25	Early Cluster	.05 .10	Florida Favorite	.05 .10
Golden Evergreen	.10 .25	Early Frame	.05 .10	Special Kleckley Sweet	.10 .15
		Boston Pickling	.05 .10	Kleckley's Sweet	.05 .10
		Early Fortune	.05 .10	Alabama Sweet	.05 .10
		Japanese Climbing	.05 .15	Halbert's Honey	.05 .10
		Gherkin	.05 .20	Special Halberts	.10 .15
		White Perfect	.05 .10	Tom Watson	.05 .10
		White Wonder	.05 .10	Special Tom Watson	.10 .15
				Special Irish Gray	.10 .15
				New Wonder	.05 .10
				Stone Mountain	.10 .15
				Golden Honey (Yellow)	.05 .10
				Angel Kiss	.05 .10
				Winter Melon	.05 .10
				Citron	.05 .10
				ONION.	
				Large Red Wethersfield	.10 .20
				Southport Red Globe	.10 .20
				Southport White Globe	.10 .20
				Yellow Danvers, flat	.10 .20
				Danvers Yellow Globe	.10 .20
				Prize Taker, or Spanish	
				King	.10 .20

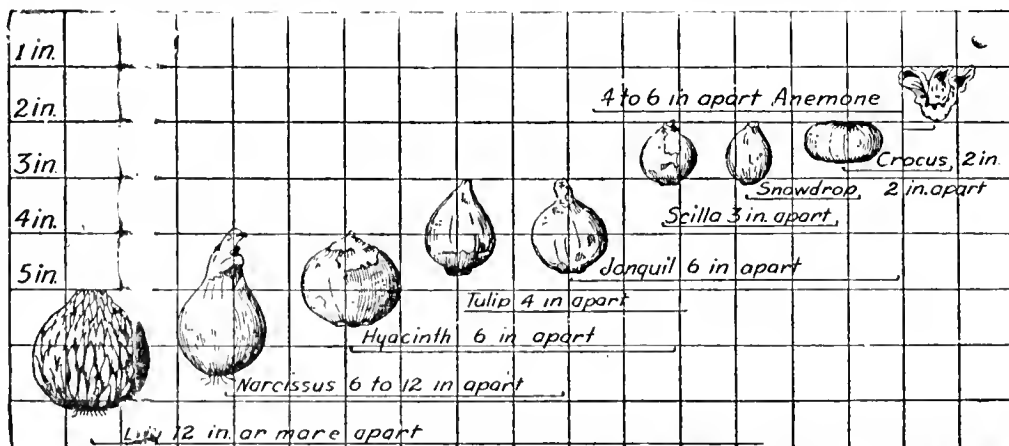
OUR COMPLETE LINE OF STANDARD GARDEN SEED Can be Ordered in Packets or Bulk

WRITE FOR PRICES IN LARGE QUANTITIES

	Postpaid Pkt. Oz.		Postpaid Pkt. Oz.		Postpaid Pkt. Oz.
White Portugal, or Silver Skin	.10 .20	St. Louis Summer	.05 .10	Sparks Earliana	.10 .40
Yellow Bermuda	.10 .30	French Breakfast	.05 .10	Crimson Cushion	.10 .50
Crystal White Wax	.10 .35	Long Scarlet Short Top	.05 .10	Ponderosa	.10 .50
Sweet Spanish	.10 .20	White Strassburg	.05 .10	Yellow Ponderosa	.10 .50
Denia, (Imp. Prize Taker)	.10 .20	Icicle	.05 .10	Dwarf Ponderosa	.10 .50
MUSTARD		White Vienna, or Lady Finger	.05 .10	Bonny Best	.10 .40
Ostrich Plume	.05 .10	Chartier Improved	.05 .10	June Pink	.10 .40
Black or Brown	.05 .10	Round Black Spanish	.05 .10	Chalk's Early Jewel	.10 .40
White	.05 .10	California White Winter	.05 .10	Marglobe Certified	.10 .50
Chinese Curled	.05 .10	China Rose Winter	.05 .10	Marglobe	.10 .40
Giant Southern Curled	.05 .10	Sparkler, (White Tip)	.05 .10	Golden Queen, (yellow)	.10 .50
OKRA, OR GUMBO		SALSIFY.		Beefsteak	.10 .50
Long Green	.05 .10	Mammoth Sandwich Island	.10 .25	Gulf State Market	.10 .40
White Velvet	.05 .10	SPINACH.		Red Head	.10 .40
Mammoth Pod	.05 .10	Bloomsdale Savoy Leaved	.05 .10	Norton Wilt Resistant	.10 .40
PARSLEY.		Round Thick Leaf	.05 .10	Oxheart	.10 .50
Moss Curled, very fine	.05 .15	All Season	.05 .10	Break O' Day	.10 .50
Triple Curled	.05 .15	New Zealand	.05 .10	Pear Shaped Red	.10 .40
PARSNIP.		SQUASH.		Pear Shaped Yellow	.10 .40
Hollow Crown	.05 .15	Yellow Bush	.05 .10	Strawberry or Husk	.10 .40
Long Smooth	.05 .15	White Bush Mammoth	.05 .10	Yellow Plum	.10 .40
White Dutch	.05 .15	Giant Summer Crookneck	.05 .10	TURNIP.	
PEPPER.		Winter Crookneck	.05 .10	Ex. Early Purple Top Milan	.05 .15
Chinese Giant	.10 .50	Hubbard	.05 .10	Ex. Early White Top Milan	.05 .15
Pimento	.10 .40	Golden Hubbard	.05 .10	Early White Flat Dutch	.05 .10
Large Bell, or Bull Nose	.10 .45	Chicago Warty Hubbard	.05 .10	Purple Top Strap Leaf	.05 .10
Cayenne, Long Red	.10 .45	Mammoth Hubbard	.05 .10	Purple Top White Globe	.05 .10
Cayenne, small	.10 .45	Delicious	.05 .10	Snow Ball	.05 .10
Golden Queen	.10 .50	Ford Hook, Veg. Marrow	.05 .10	Pomeranian White Globe	.05 .10
Sweet Mountain	.10 .35	Sweet Potato	.10 .20	White Egg	.05 .10
Ruby King	.10 .45	Banana	.10 .20	Amber Globe	.05 .10
California Wonder	.10 .50	TOBACCO.		Cowhorn	.05 .10
Red Chile	.10 .45	Yellow Pryor	.10 .50	Yellow Globe	.05 .10
PUMPKIN.		Red Burley	.10 .50	Seven Top	.05 .10
Common Field, Stock	.05 .10	Missouri Broad Leaf	.10 .50	Shogoin Louse Resistant	.05 .10
Kentucky Field, Stock	.05 .10	Big Havana	.10 .50	RUTABAGA, OR SWEDISH TURNIP	
Large Cheese, all purpose	.05 .10	One Sucker	.10 .50	American Purple Top	.05 .10
Tennessee Sweet, for pies	.05 .15	Judy's Pride	.20 1.00	White Russian	.05 .10
Japanese Pie, for pies	.05 .15	TOMATO.		SWEET PEAS.	
Jonathan, for pies	.05 .15	(High Class Tested Stock for Canners)		Choice Mixed	.05 .10
Small Sugar, for pies	.05 .15	New Stone	.10 .25	Spencer Mixed	.10 .20
King of Mammoth, for pies	.05 .15	Greater Baltimore	.10 .25	NASTURTIUMS.	
White Cushaw, for pies	.05 .15	Matchless	.10 .25	Tall Mixed	.10 .20
Striped Cushaw, for pies	.05 .15	Red Rock	.10 .25	Dwarf Mixed	.10 .20
RHUBARB.		John Baer	.10 .25	Castor Beans, Flowering	.10 .20
Victoria	.10 .15	Dwarf Stone	.10 .40	HERBS.	
Linnaeus	.10 .15	Acme	.10 .40	Basil Sweet	.10 .10
RADISH—French Grown Seed.		Livingston's Beauty	.10 .25	Caraway	.10 .10
Vick's Scarlet Globe	.05 .10	Livingston's Globe	.10 .40	Dill	.10 .10
Crimson Giant Forcing	.05 .15	Livingston's Perfection	.10 .25	Fennel	.10 .10
Early Scarlet White Tipped	.05 .10	Dwarf Champion	.10 .40	Sage	.10 .10
Early Scarlet Turnip	.05 .10			Summer Savory	.10 .10
				Sweet Marjoram	.10 .10
				Sweet Thyme	.10 .10

Bulbs For Fall Planting AUTUMN 1934

DIAGRAM SHOWING DEPTH TO PLANT OUTDOORS



Bulbs outdoors do not require such deep planting as indicated in the diagram. Being no danger from freezing and thawing to guard against.

Since 1896 Springfield Seed Co's. Bulbs for Fall Planting are known for their High Standard of Quality. Free Delivery by mail—All bulbs offered in our list will be delivered to your doorstep anywhere in the United States by parcel post, Pre-paid, at prices mentioned in this catalog.

FARM and VEGETABLE SEED PLANTING GUIDE

FARM SEEDS

	Pounds per acre	per bu.	Time of Seeding	Pounds per acre	per bu.	Time of Seeding
Alfalfa, broadcast	18-22	60	Feb.-May	60-100	20	Apr.-May
Alfalfa, drilled	14-17	60	Feb.-May	15-25	25	Mar.-May
Alfalfa, Grimm	20-25	60	Feb.-May	20-30	50	Apr.-June
Barley	95-110	48	Apr.-June	25	50	Apr.-May
Beans, in hills	20-35	60	Apr.-June	25	48	Apr.-May
Blue Grass, Kentucky, pasture	20-30	14	Feb.-May	15	35	Apr.-May
Blue Grass, Kentucky, lawns	60-100	14	Mar.-June	40-50	50	May-June
Blue Grass, Canada, pasture	14-20	14	Mar.-June	48-70	32	Mar.-May
Blue Grass, Canada, lawns	60-100	14	Mar.-June	30	14	Mar.-May
Brome Grass, for hay	18-20	14	Mar.-June	8 Bu.32	Mar.-May	Mar.-May
Brome Grass, pasture	20-25	14	Mar.-June	40-80	14	Mar.-May
Broom Corn	5-8	48	Apr.-June	21-28	14	Feb.-May
Buckwheat	60-70	52	May-June	10-14	22	Apr.-May
Cane, forage, broadcast	75-100	50	May-June	44	56	Apr.-May
Cane, seed or syrup	8-10	50	May-June	8-12	56	Apr.-May
Clover, Alsike	4-8	60	May-June	4-5	50	Apr.-May
Clover, Alsike and Timothy	15-20	45	Feb.-June	4-8	50	Apr.-May
Clover, Crimson	12-15	50	Apr.-May	7-14	14	Feb.-June
Clover, Hubam	20-25	60	Feb.-Apr.	55-65	56	Apr.-June
Clover, Mam., alone	8-12	60	Feb.-Apr.	40-50	20	Apr.-June
Clover, Red, alone	18-20	60	Feb.-Apr.	30-40	60	May-Aug.
Clover, Sweet hulled	30-40	30	Feb.-May	60-80	60	May-Aug.
Clover, Sweet, unhulled	4-8	60	Feb.-May	30-40	40	Apr.-May
Clover, White	7-14	56	May-June	6-8	40	Apr.-June
Corn	30-35	56	May-June	20-25	40	Apr.-June
Corn, Silage	60-75	60	May-June	20	46	May-July
Cow Peas, broadcast	15-20	60	May-Aug.	75	28	May-July
Canada Field Peas, broadcast	60-75	60	May-Aug.	150	46	May-June
Canada Field Peas, with Oats	30-45	60	Apr.-May	7-12	45	Apr.-June
Fescue, Meadow	20-30	24	Feb.-Apr.	8	60	Feb.-Mar.
Fescue, other varieties	28-35	14	Apr.-June	4	60	Fall
Feterita	40-50	50	May-June	60	60	Fall
Flax, for seed	35-45	56	May-June	90	60	Fall
Johnson Grass	25-30	25	Apr.-June	80	60	Fall
Kaffir, drills	12-15	50	May-June	80	60	Fall
Kaffir, broadcast	50-60	50	May-June			Spring

VEGETABLE SEEDS

Vegetable	Average Number of Seeds per Ounce	Average Weight of Seeds in Quart in Ounces	Amount Required for 100 feet of Drill	Amount of Seed required Per Acre	Depth of Planting
Asparagus	1,000	32	1 oz.	5 lbs.	1 in.
Beans, Dwarf	100	30	1 lb.	60 lbs.	1 in.
Beans, Pole	100	30	1/2 lb.	30 lbs.	1 in.
Beet, Garden	1,750	10	1 oz.	6 lbs.	1 in.
Beet, Mangel	1,200	10	1 oz.	5 lbs.	1 in.
Brussels Sprouts	6,500	24	1/4 oz.	2 oz.	1/2 in.
Cabbage	5,000	24	1/4 oz.	4 oz.	1/2 in.
Carrot	14,000	12	1/4 oz.	2 lbs.	1/2 in.
Cauliflower	10,000	24	1/4 oz.	1 oz.	1/2 in.
Celery	100,000	16	1/4 oz.	4 oz.	1/2 in.
Collards	4,500	24	1/4 oz.	4 oz.	1/2 in.
Corn, Sweet	125	23	1/4 lb.	12 lbs.	1 in.
Cucumber	1,000	18	1/2 oz.	2 lbs.	1 in.
Eggplant	5,000	18	1/4 oz.	4 lbs.	1 in.
Endive	13,500	12	1 oz.	2 lbs.	1 in.
Kale	7,500	24	1/4 oz.	1 lb.	1 in.
Kohlrabi	7,000	24	1/4 oz.	1 lb.	1 in.
Leek	8,000	18	1/2 oz.	4 lbs.	1/2 in.
Lettuce	16,000	14	1/2 oz.	3 lbs.	1/2 in.
Melon, Musk	1,000	12	1/2 oz.	2 lbs.	1 in.
Melon, Water	225	16	1 oz.	2 lbs.	1 in.
Mustard	18,000	30	1/4 oz.	1 lb.	1/4 in.
Okra	425	20	2 oz.	8 lbs.	1 in.
Onion	12,500	16	1 oz.	4 lbs.	1/2 in.
Parsley	17,500	12	1/4 oz.	3 lbs.	1/2 in.
Parsnip	2,800	10	1/2 oz.	3 lbs.	1/2 in.
Peas	50 to 150	30	1 lb.	60 lbs.	1 in.
Pepper	4,000	16	1/2 oz.	2 oz.	1/2 in.
Pumpkin	100	9	1 oz.	4 lbs.	1 in.
Radish	5,000	24	1 oz.	10 lbs.	1 in.
Salsify	4,500	12	1 oz.	8 lbs.	1 in.
Spinach	3,000	14	1 oz.	8 lbs.	1 in.
Squash, Summer	300	20	1/2 oz.	4 lbs.	1 in.
Squash, Winter	125	14	1/2 oz.	2 lbs.	1 in.
Tomato	7,500	10	1/2 oz.	2 lbs.	1 in.
Turnip	10,000	24	1/2 oz.	1 lb.	1/2 in.

Flower Seeds===

Selected Strains===Superior Quality



**OUR FLORAL
DEPARTMENT**
Open Day and Night
24 Hour Service

SPRINGFIELD'S TELEGRAPH FLORIST
FLOWERS DELIVERED ANYWHERE
100% VALUE GUARANTEED
CITY PHONE 21
LONG DISTANCE, PRIVATE
WIRE, L. D. 4
Greenhouse and Floral Supplies

© GALLOWAY LITHO. CO. S.F. N993
MADE IN U.S.A.

Springfield Seed Company

Corner Campbell and Walnut Streets

Springfield, Missouri